

11 Whitefield Grove,

£465,000

🛏 4 🚗 2 🚗 1

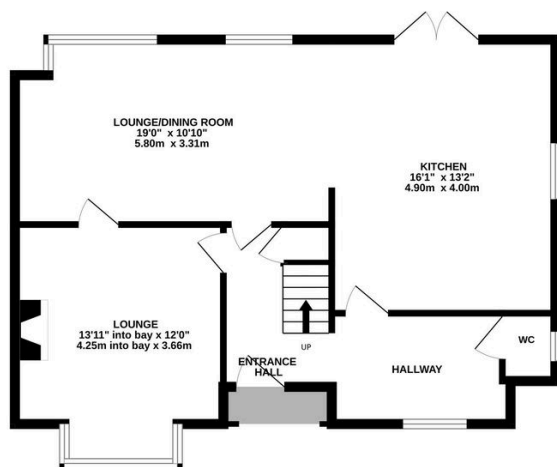


Situated on a generous corner plot, this extended four-bedroom semi-detached property offers well-proportioned living space ideal for family life. Located within walking distance of Oughtrington Primary School and close to a range of local amenities. The property benefits from wraparound gardens, a private driveway providing off-road parking and a garage. Early viewings are highly recommended to fully appreciate all that this excellent family home has to offer.

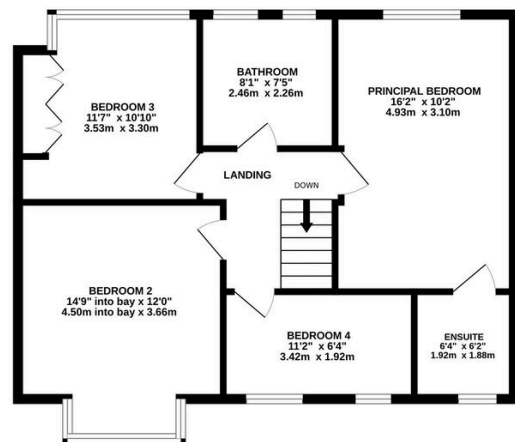
Key Features

- Extended four bedroom semi-detached property
- Wraparound gardens
- Garage
- Master bedroom with en suite shower room
- Offering spacious, versatile accommodation
- Walking distance of Oughtrington Primary School
- Driveway providing off-road parking
- Kitchen with integrated appliances and French doors onto the rear garden
- Family bathroom with a four piece suite
- Early viewings strongly recommended

GROUND FLOOR
701 sq.ft. (65.1 sq.m.) approx.



1ST FLOOR
668 sq.ft. (62.0 sq.m.) approx.



TOTAL FLOOR AREA: 1369 sq.ft. (127.2 sq.m.) approx.

Whilst every attempt has been made to ensure the accuracy of the floorplan contained here, measurements of doors, windows, rooms and any other items are approximate and no responsibility is taken for any error, omission or mis-statement. This plan is for illustrative purposes only and should be used as such by any prospective purchaser. The services, systems and appliances shown have not been tested and no guarantee as to their operability or efficiency can be given.
Made with Metropix ©2025