




22 Adey Road, Lymm

Offers Over £480,000

 4  2  2

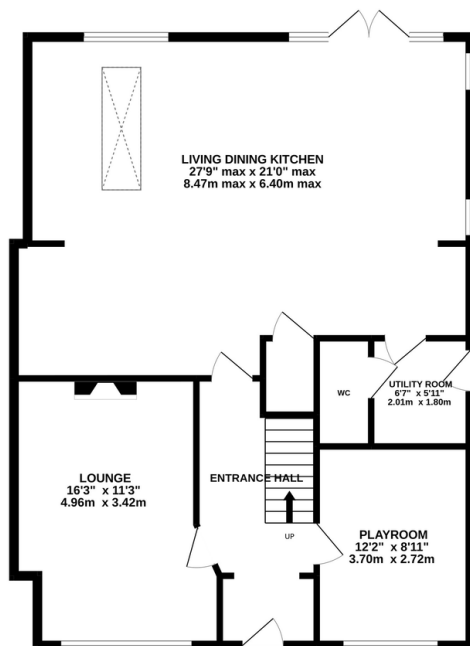


Extended and beautifully presented 4 bed semi-detached house with open countryside views to the rear and access directly onto the Trans Pennine Trail. Offering spacious family accommodation and a stunning master suite, this property needs to be viewed internally to appreciate the fine fixtures and fittings and exceptional views.

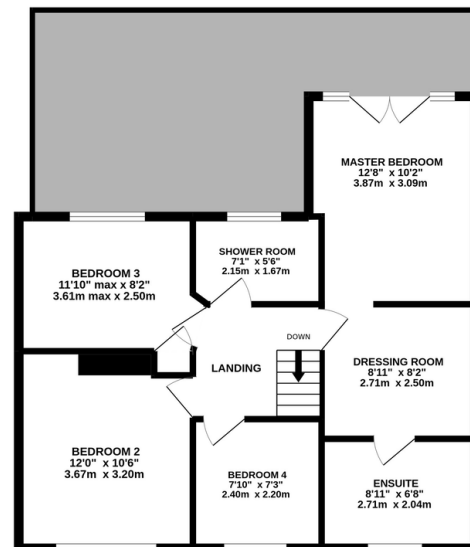
Key Features

- Exceptional 4 bed semi detached family home in excellent condition throughout
- Stunning open plan kitchen/diner and family room
- Glorious views over open fields and beyond, direct access to Trans Pennine Trail
- Easy commuting distance to major motorway networks
- Master bedroom suite including dressing room and ensuite bathroom
- Off road parking for 3 cars, EV point
- Internal viewing essential
-
-

GROUND FLOOR
1023 sq.ft. (95.0 sq.m.) approx.



1ST FLOOR
657 sq.ft. (61.0 sq.m.) approx.



TOTAL FLOOR AREA: 1679 sq.ft. (156.0 sq.m.) approx.

Whilst every attempt has been made to ensure the accuracy of the floorplan contained here, measurements of doors, windows, rooms and any other items are approximate and no responsibility is taken for any error, omission or mis-statement. This plan is for illustrative purposes only and should be used as such by any prospective purchaser. The services, systems and appliances shown have not been tested and no guarantee as to their operability or efficiency can be given.

Made with Metropix ©2022