




West View, High Legh Road, Lymm WA13 0RS

£700,000

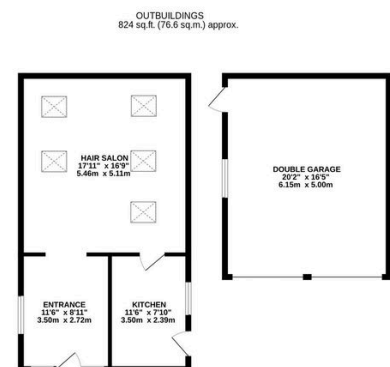
 3  1  4



AVAILABLE TO CASH BUYERS ONLY. West View offers spacious versatile accommodation and sits on a good sized plot with two driveways providing plentiful off-road parking. The property was built in 1921 and was formerly a local shop with a Hair Salon located in the grounds, (still trading until sale). A detached double garage and generous gardens, plus a further wedge of land located to the far right hand side of the property, make this a substantial plot. Early viewings are strongly recommended to appreciate the huge potential.

Key Features

- Spacious detached period property
- Sitting on a generous plot
- Plentiful off-road parking
- Double Garage
- Mature gardens
- Well proportioned rooms
- Detached building currently utilized as a Hair Salon
- Offered for sale with the benefit of No Onward Chain. CASH BUYERS ONLY
- Property built 1921
- Early viewings strongly recommended to appreciate the huge potential on offer



TOTAL FLOOR AREA : 2327 sq.ft. (216.2 sq.m.) approx.

Whilst every attempt has been made to ensure the accuracy of the floorplan contained here, measurements of doors, windows, rooms and any other items are approximate and no responsibility is taken for any error, omission or mis-statement. This plan is for illustrative purposes only and should be used as such by any prospective purchaser. The services, systems and appliances shown have not been tested and no guarantee as to their operability or efficiency can be given.
Made with Metropix ©2025.