

62, Weaste Lane, Thelwall, Warrington, WA4 3JR

Offers Over £400,000

🛏 2 🚿 1 🛋 2



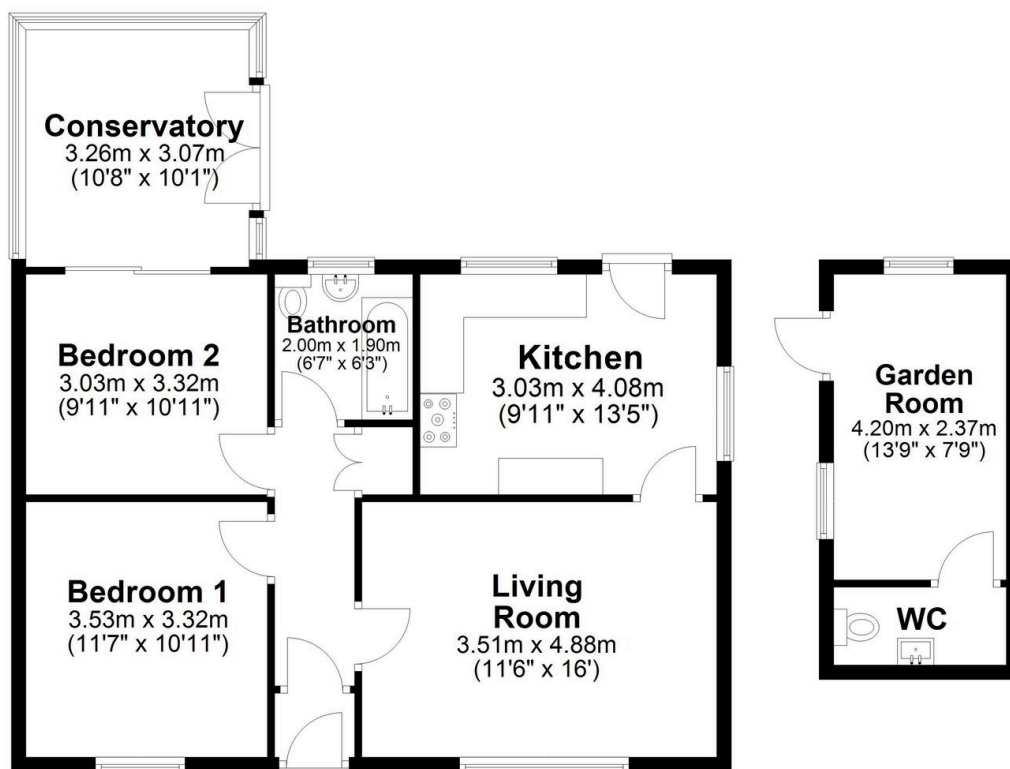
A superb opportunity to purchase, with the benefit of no onward chain, a detached two bedroom bungalow, which is situated in a semi rural location with stunning open farmland views to the rear elevation. An internal viewing is highly recommended to appreciate the potential of this property.

## Key Features

- Two bedroom detached bungalow
- Driveway providing plentiful off-road parking
- Kitchen
- Family Bathroom
- Close to all local amenities
- Lovely views to the rear over open farmland
- Lounge
- Conservatory
- Garden Room which lends itself to many uses i.e. home office/gym
- Viewings strongly recommended

### Ground Floor

Approx. 86.2 sq. metres (928.0 sq. feet)



Total area: approx. 86.2 sq. metres (928.0 sq. feet)