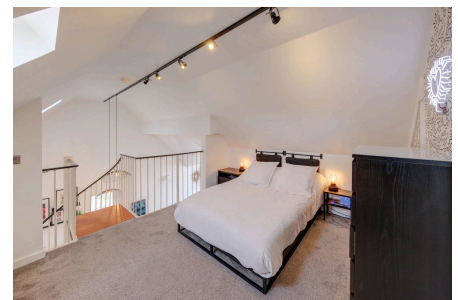


The Farthings, Lymm, WA13 9GD

£240,000

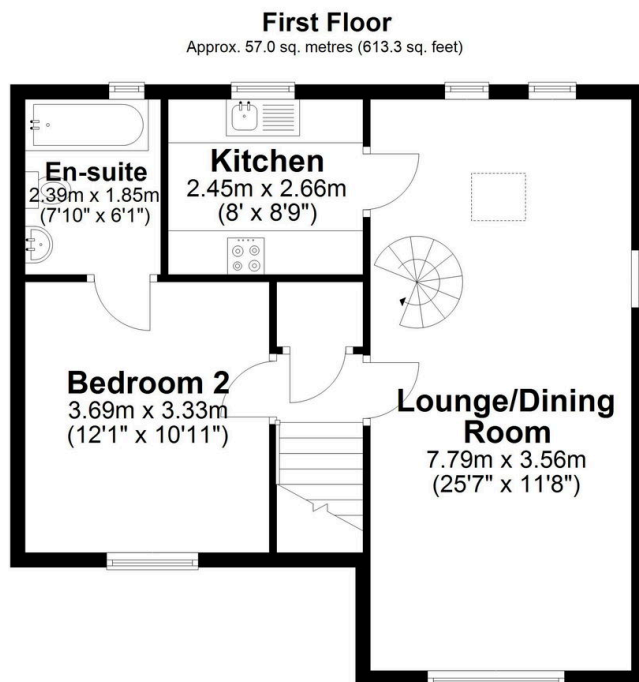
🛏 2 🍳 2 🛋 1



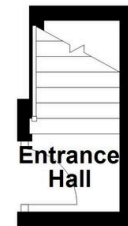
Situated in a small, well-maintained development close Lymm village. This stylish duplex apartment offers a spacious and contemporary living. The property briefly comprises of; a light and airy living/dining room with vaulted ceilings, separate kitchen, two double bedrooms, both en-suite with a spiral staircase leading to the mezzanine level bedroom. Allocated parking for one vehicle and a communal garden. Viewings are highly recommended to fully appreciate the unique appeal and layout of this property.

Key Features

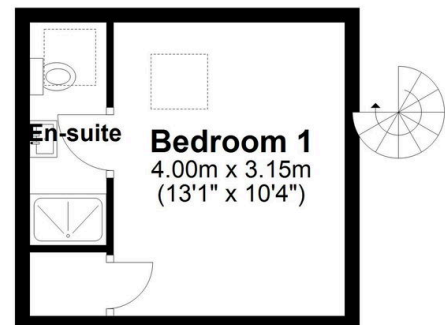
- Duplex Apartment
- Situated in a small courtyard development
- Separate fully fitted, kitchen with Kettle Tap
- Vaulted ceiling and a spiral stair case to mezzanine
- Two double bedrooms, both ensuite
- One allocated parking space and visitor spaces
- Communal Garden
- Close to local amenities
- Internal viewing highly recommended to appreciate interior space
- Easy commuting distance to major motorway networks



Ground Floor
Approx. 2.9 sq. metres (31.3 sq. feet)



Second Floor
Approx. 17.2 sq. metres (184.9 sq. feet)



Total area: approx. 77.1 sq. metres (829.6 sq. feet)