

47 Higher Lane, Lymm WA13 0BA

£725,000

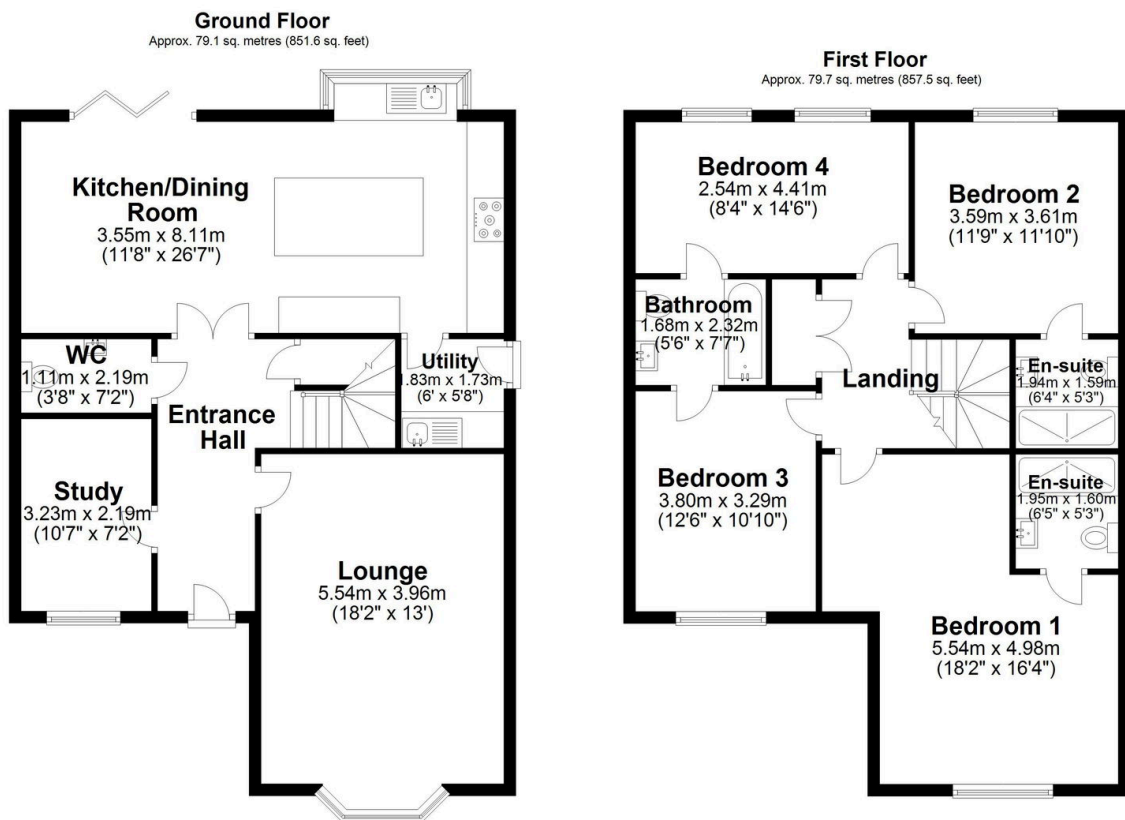
🛏 4 🚿 3 🛋 2



A bespoke built, individually designed, detached 4 bed house on sought after Higher Lane, Lymm. Superbly presented and maintained throughout, with high end fixtures and fittings, an internal viewing of the property is highly recommended.

Key Features

- Easy walking distance to Lymm village centre and all of its amenities
- Master bedroom with en suite shower room
- Exceptionally well maintained
- Fully enclosed rear garden
- Modern four bedroom detached property, built 2018
- Stunning kitchen/dining room with integrated appliances
- High tech fittings throughout
- Shared driveway with parking for 3 vehicles & EV point
- INTERNAL VIEWING ESSENTIAL



Total area: approx. 158.8 sq. metres (1709.2 sq. feet)

Measurements of rooms and any other items are approximate and no responsibility is taken for any misstatement. This plan is for illustrative purposes only and should be used as such. Produced by OpenInsight.co.uk
Plan produced using PlanUp.