

30 Northway, Lymm, WA13 9AT

£115,000

🛏️ 1 🚿 1 🚻 1



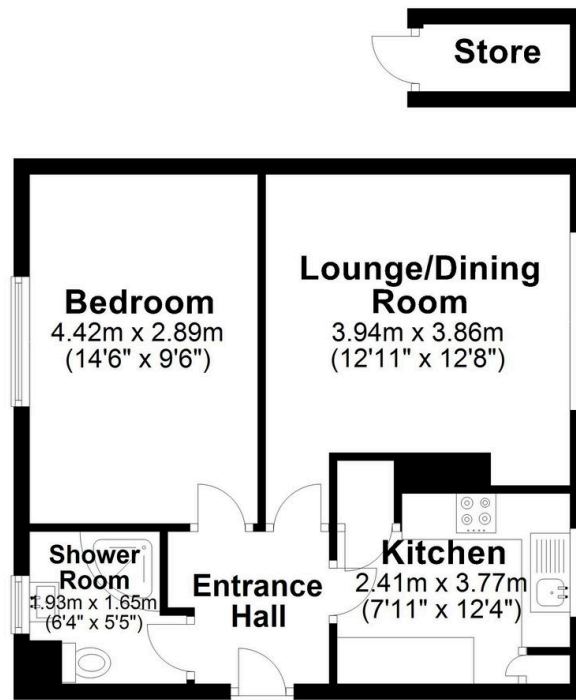
A bright and spacious one bedroom ground floor apartment, offering spacious accommodation. Briefly comprising; Entrance hallway, kitchen, lounge/dining room, one good sized bedroom and shower room. Externally there is an open plan, private lawned garden and brick store. CHAIN FREE.

Key Features

- CHAIN FREE
- Ground floor apartment with private garden
- Bright airy rooms
- Easy commuting distance to major motorway networks
-
- Great opportunity for first time buyers
- Spacious Lounge/dining room
- Internal viewing highly recommended to appreciate interior space
-
-

Ground Floor

Approx. 47.7 sq. metres (513.6 sq. feet)



Total area: approx. 47.7 sq. metres (513.6 sq. feet)

Measurements of rooms and any other items are approximate and no responsibility is taken for any misstatement. This plan is for illustrative purposes only and should be used as such. Produced by OpenInsight.co.uk
Plan produced using PlanUp.