

16 Bellsfield Close, Lymm WA13 0BB

£1,250,000

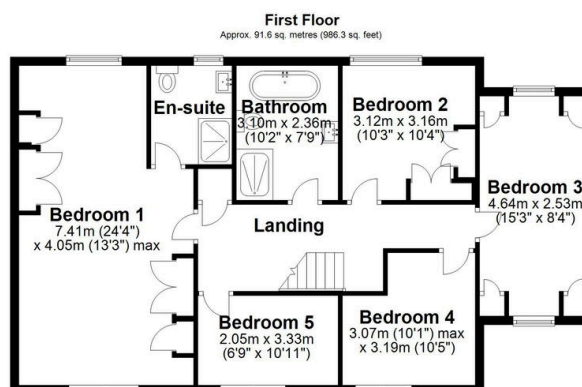
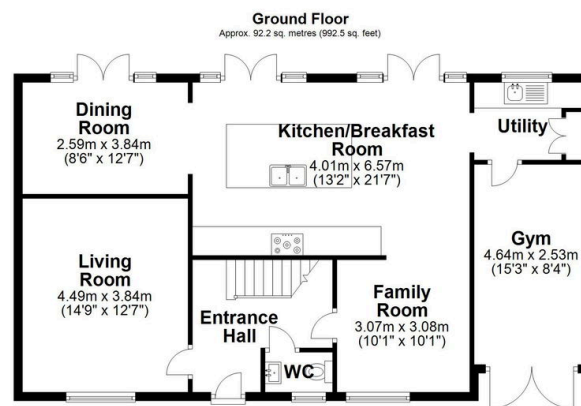
🛏️ 5 🚗 2 🛋️ 2



Five bed detached house with splendid views to the rear elevation over miles of open countryside. Beautifully styled throughout yet with a charming atmosphere, this property offers exceptional accommodation in a private cul-de-sac within walking distance of highly sought after Lymm village. Internal viewing essential.

Key Features

- Five bed detached home in a private cul-de-sac of just three properties
- Top of the range fixtures and fittings throughout
- Manicured rear garden with additional 'fallow' area which doubles the size of the plot
- A very special property which must be viewed internally to appreciate the location and privacy.
- Located just off Higher Lane, so within easy walking distance of Lymm village and amenities
- Exceptional, long ranging views over open agricultural countryside - one of the most highly sought after views in Lymm
- Outdoor entertaining area which includes an outdoor kitchen with wood fired pizza oven & BBQ
- Easy commuting distance to local major motorway networks, Altrincham and Manchester



Total area: approx. 183.8 sq. metres (1978.8 sq. feet)

Measurements of rooms and any other items are approximate and no responsibility is taken for any misstatement. This plan is for illustrative purposes only and should be used as such. Produced by OpenInsight.co.uk
Plan produced using PlanUp.