

12 Grove Avenue, Lymm WA13 0HF

£260,000

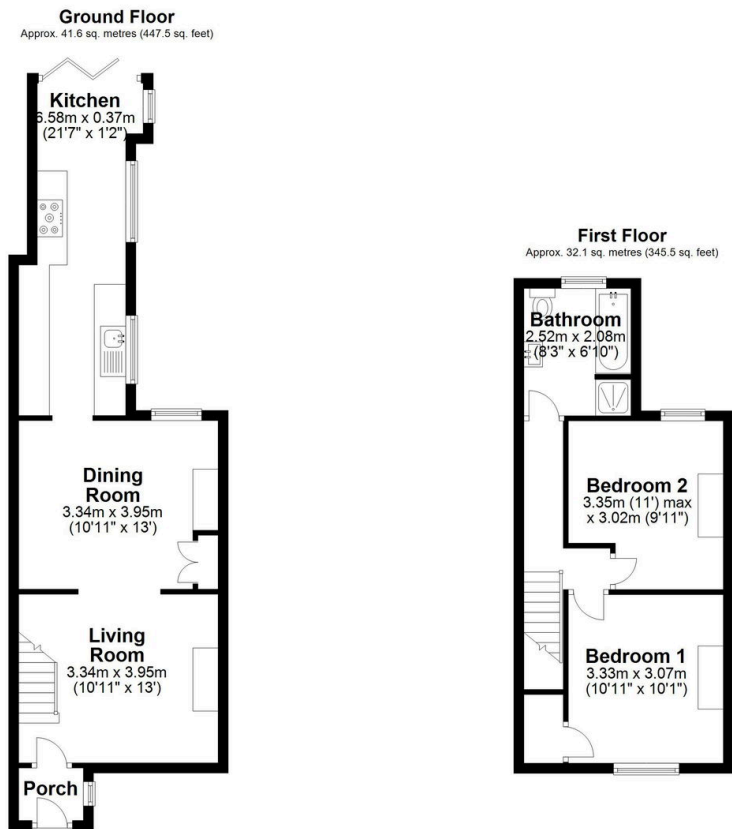
🛏️ 2 🚿 1 🚗 2



Attractive, garden fronted two bedroom mid terrace house within walking distance of Lymm village and amenities. Well maintained and presented throughout, we recommend early viewing of this ready to move into home.

Key Features

- Two bed mid-terrace house in move in condition
- NO CHAIN
- Two reception rooms, two double bedrooms
- Pretty courtyard garden
- Extended kitchen with bi-fold doors to courtyard garden
- Walking distance to Lymm village and local amenities
- Easy commuting distance to major motorway networks
- Garden to front elevation



Total area: approx. 73.7 sq. metres (792.9 sq. feet)

Measurements of rooms and any other items are approximate and no responsibility is taken for any misstatement. This plan is for illustrative purposes only and should be used as such.
Produced by Openinsight.co.uk
Plan produced using PlanUp.