

4 Longcroft Place, Lymm WA13 9UD

Offers Over £525,000

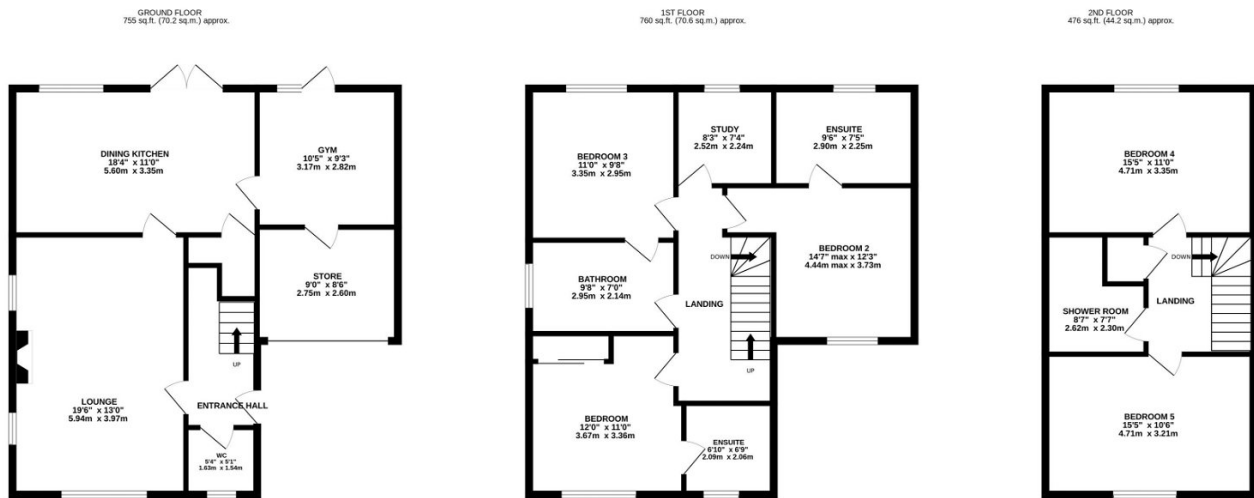
 6  4  2



Spacious 5/6 bedroom detached family home offering deceptively spacious versatile accommodation arranged over three floors. Located in a quiet cul-de-sac with delightful views to the front overlooking Heatley Mere and providing off-road parking and a fully enclosed private Westerly facing rear garden. Early viewings are strongly recommended to appreciate all that this property has to offer and its delightful views to the front elevation.

Key Features

- Large 5/6 bedroom detached property
- Popular location
- Delightful views to the front overlooking Heatley Mere
- Off-road parking
- Converted Garage to provide a store room and gym/home office
- Fully enclosed Westerly facing rear garden
- Four bathrooms
- Good sized rooms throughout
- Offering versatile accommodation
- Early viewings strongly recommended



TOTAL FLOOR AREA: 1992 sq.ft. (185.1 sq.m.) approx.

Whilst every attempt has been made to ensure the accuracy of the floorplan contained here, measurements of doors, windows, rooms and any other items are approximate and no responsibility is taken for any error, omission or mis-statement. This plan is for illustrative purposes only and should be used as such by any prospective purchaser. The services, systems and appliances shown have not been tested and no guarantee as to their operability or efficiency can be given.
Made with Metropix ©2024