

5 Wychwood Avenue, Lymm, WA13 0NE

£575,000

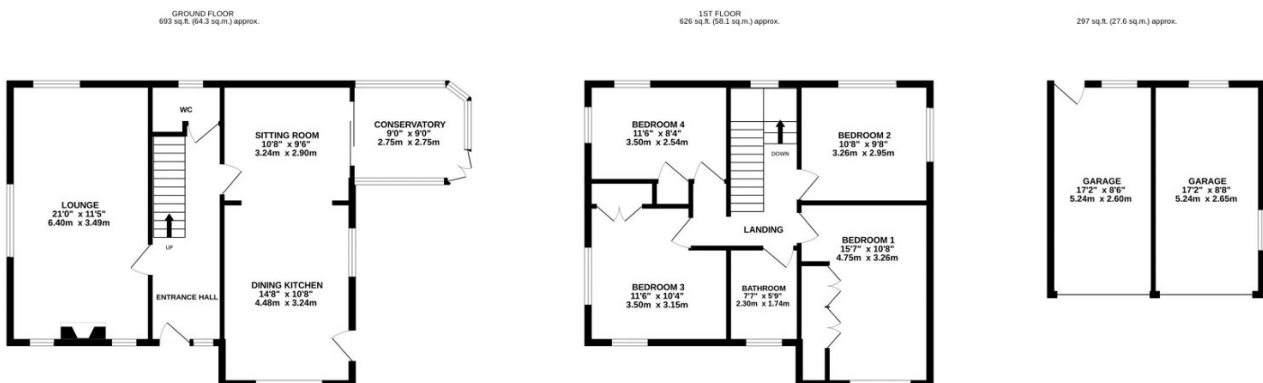
🛏️ 4 🚗 1 🚗 2



Four bedroom detached property located within walking distance of Cherry Tree Primary School and close to all local amenities. Sitting on a good sized corner plot with well maintained gardens and having the benefit of a driveway providing off-road parking and two detached garages.

## Key Features

- Four double bedroom detached property
- Good sized driveway
- Sitting on a good sized corner plot with well maintained gardens
- Spacious Lounge
- Conservatory
- Walking distance of Cherry Tree Primary School
- Quiet cul-de-sac location
- Two Garages
- Dining Kitchen opening onto Sitting Room
- Early viewings highly recommended



TOTAL FLOOR AREA: 1615 sq.ft. (150.0 sq.m.) approx.

Whilst every attempt has been made to ensure the accuracy of the floorplan contained here, measurements of doors, windows, rooms and any other items are approximate and no responsibility is taken for any error, omission or mis-statement. This plan is for illustrative purposes only and should be used as such by any prospective purchaser. The services, systems and appliances shown have not been tested and no guarantee as to their operability or efficiency can be given.

Made with Metropix ©2024.