

34, Ridgway Gardens, Lymm WA13 0HQ

£350,000

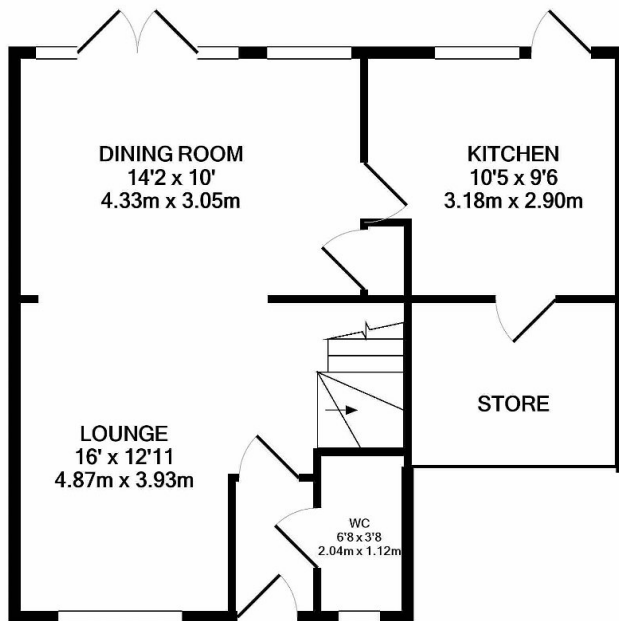
🛏 3 🚿 2 🚗 2



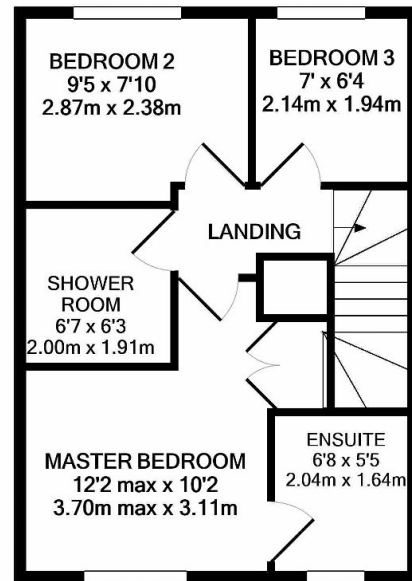
An immaculately presented three bedroom property, with views towards the Bridgewater Canal and situated within walking distance of Lymm village centre and all its amenities. With the benefit of off road parking and a well maintained, fully enclosed rear garden, early viewings are strongly recommended.

## Key Features

- Immaculately presented three bedroomed house
- Views towards Bridgewater canal
- Easy access to motorway networks for commuters
- Off road parking
- Walking distance to Lymm village and its amenities
- Fully enclosed well maintained private rear garden
- Master bedroom with en suite shower room
- Early viewings highly recommended



GROUND FLOOR  
APPROX. FLOOR  
AREA 511 SQ.FT.  
(47.5 SQ.M.)



1ST FLOOR  
APPROX. FLOOR  
AREA 366 SQ.FT.  
(34.0 SQ.M.)

TOTAL APPROX. FLOOR AREA 877 SQ.FT. (81.5 SQ.M.)

Whilst every attempt has been made to ensure the accuracy of the floor plan contained here, measurements of doors, windows, rooms and any other items are approximate and no responsibility is taken for any error, omission, or mis-statement. This plan is for illustrative purposes only and should be used as such by any prospective purchaser. The services, systems and appliances shown have not been tested and no guarantee as to their operability or efficiency can be given  
Made with Metropix ©2020