

11, Farcroft Close, Lymm WA13 9US

£140,000

🛏 1 🚗 1 🚗 1

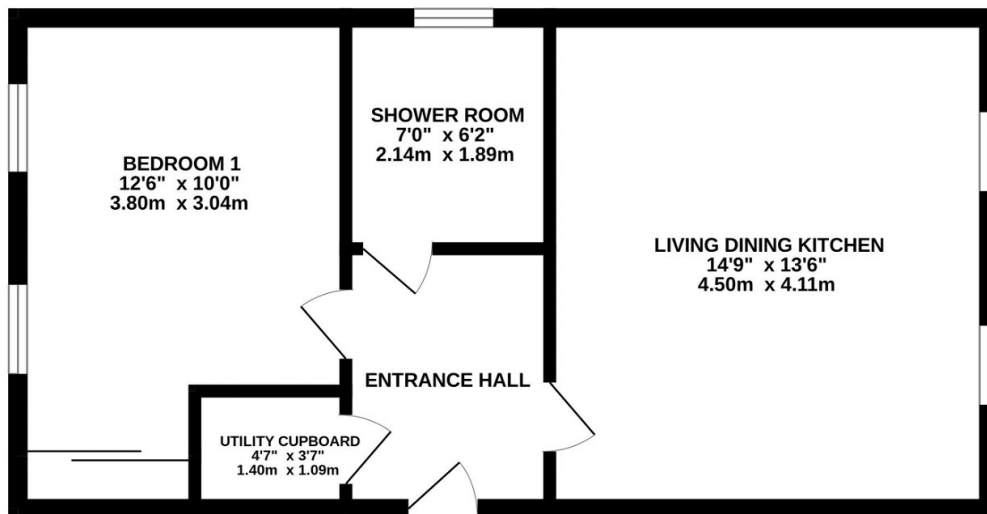


A one bedroom top floor apartment in a block of similar style properties having the benefit of parking to the rear. The property is located in the picturesque village of Lymm and a short distance from the Trans Pennine Trail offering walking, running and cycling leisure through the Cheshire countryside. Close to local amenities and bus route, internal viewing recommended.

## Key Features

- One bed apartment in move in condition
- 14ft living dining kitchen area
- Allocated parking space for 1 vehicle plus 4 visitors parking spaces
- Close to Lymm village and local amenities
- Easy access to Trans Pennine Trail and countryside beyond
- Close commuting distance to major motorway networks
- Perfect starter home or downsize apartment
- 
- 

441 sq.ft. (41.0 sq.m.) approx.



TOTAL FLOOR AREA : 441 sq.ft. (41.0 sq.m.) approx.

Whilst every attempt has been made to ensure the accuracy of the floorplan contained here, measurements of doors, windows, rooms and any other items are approximate and no responsibility is taken for any error, omission or mis-statement. This plan is for illustrative purposes only and should be used as such by any prospective purchaser. The services, systems and appliances shown have not been tested and no guarantee as to their operability or efficiency can be given.

Made with Metropix ©2024