

Lakeside Road, Lymm, Cheshire, WA13 0GR

£735,000

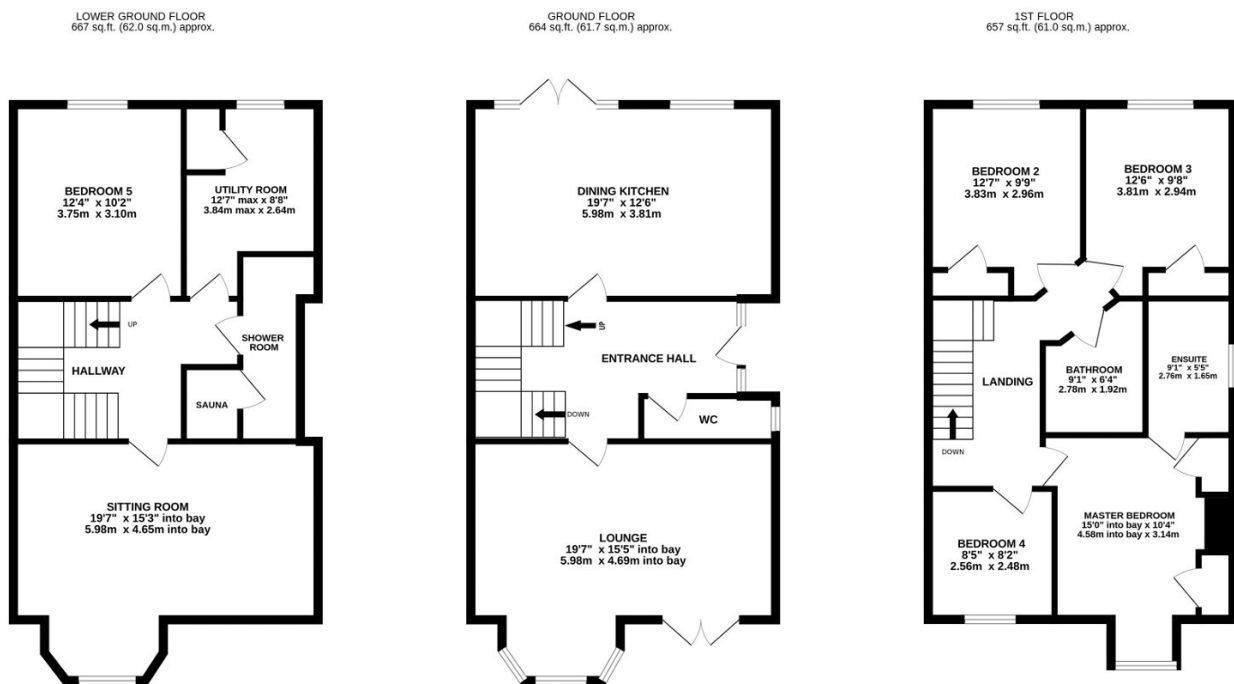
🛏 5 🚿 3 🚗 2



Brook House Court is a select development of just 7 individually designed properties located a short distance from Lymm Dam and the village. This three storey, link semi detached comprises ground floor:- Open canopy entrance porch, entrance hallway, spacious lounge and dining kitchen with integrated appliances, WC. First floor :- Master bedroom with en suite shower room, two further double bedrooms, single bedroom and family bathroom. Lower ground floor:- versatile uses such as generous sitting room/games room/office, double bedroom, utility room/ 2nd kitchen, shower room with sauna room. To the front of the property is a gated, sunny south west facing enclosed courtyard and to the rear lawned garden stocked and a shielded outdoor patio area. A pathway provides access to the double garage and visitors parking area.

Key Features

- Beautifully presented five bedroom, 3 storey property
- Walking distance of Lymm Village/Dam
- Master bedroom with en suite shower room
- Mature and lawned garden to the rear
- Sauna/Steam Room
- Select development of just seven individually designed properties
- M6/M56/M62 Motorway links and Warrington mainline Station
- Fully enclosed Courtyard to the front
- Double Garage
- Viewings strongly recommended



TOTAL FLOOR AREA: 1988 sq.ft. (184.7 sq.m.) approx.

Whilst every attempt has been made to ensure the accuracy of the floorplan contained here, measurements of doors, windows, rooms and any other items are approximate and no responsibility is taken for any error, omission or mis-statement. This plan is for illustrative purposes only and should be used as such by any prospective purchaser. The services, systems and appliances shown have not been tested and no guarantee as to their operability or efficiency can be given.
Made with Metropix ©2023