

40 Rush Green Road, Lymm

Offers Over £335,000

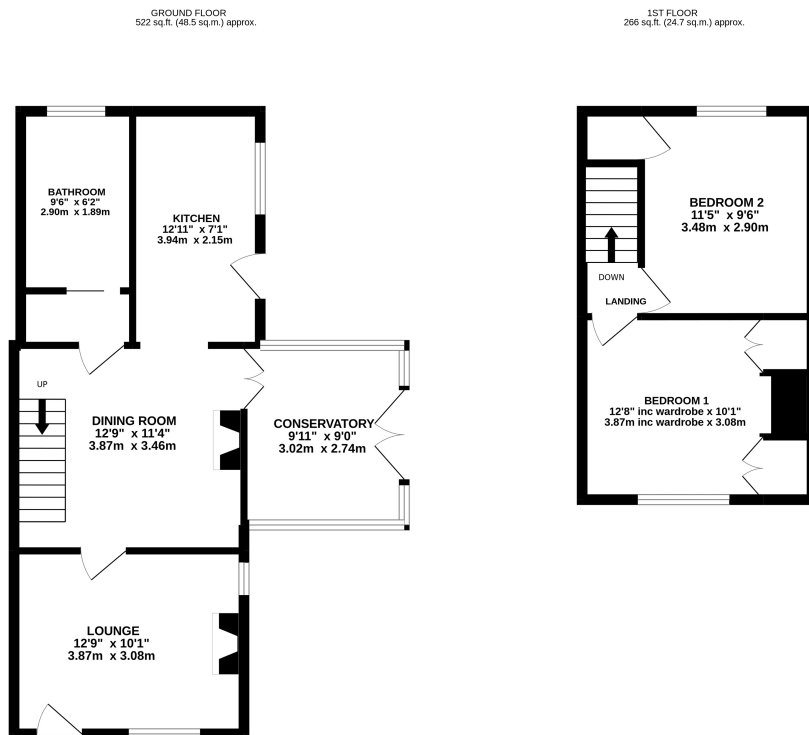
🛏️ 2 🍽️ 1 🚗 2



Charming end terraced cottage located within walking distance of Lymm Village Centre and its amenities. Occupying a good sized plot with Planning Permission granted for a part two storey side/rear extension and part single storey side/rear extension - Planning Application No. 2022/42119. Internal viewings highly recommended. EPC Rating D.

Key Features

- PLEASE NOTE THESE PHOTOS ARE FOR ILLUSTRATION PURPOSES ONLY
- Lounge
- Conservatory
- Good sized plot
- Walking distance of Lymm village Centre
- Separate Dining Room
- Downstairs Bathroom
- Planning Permission granted - Application No. 2022/42119



TOTAL FLOOR AREA: 788 sq.ft. (73.2 sq.m.) approx.
Whilst every attempt has been made to ensure the accuracy of the floorplan contained here, measurements of doors, windows, rooms and any other items are approximate and no responsibility is taken for any error, omission or mis-statement. This plan is for illustrative purposes only and should be used as such by any prospective purchaser. The services, systems and appliances shown have not been tested and no guarantee as to their operability or efficiency can be given.
Made with Metropix i2022