





# Kingfisher House, Waterside Close, BH24

Asking Price £395,000

A fantastic location close to Ringwood Town Centre, private and secluded position with stunning lakeside views and no forward chain, are just a few features of this spacious first floor apartment that requires some modernisation.

The property is offered by the executors and offers spacious accommodation with two generous bedrooms, two bathrooms and a particularly spacious sitting / dining room with doors leading out to a private balcony and outstanding views across the grounds. The kitchen offers plenty of units and worktop space with contrasting splashbacks. Throughout the décor is subtle and neutral and offers very much a blank canvas to decorate to your own style.

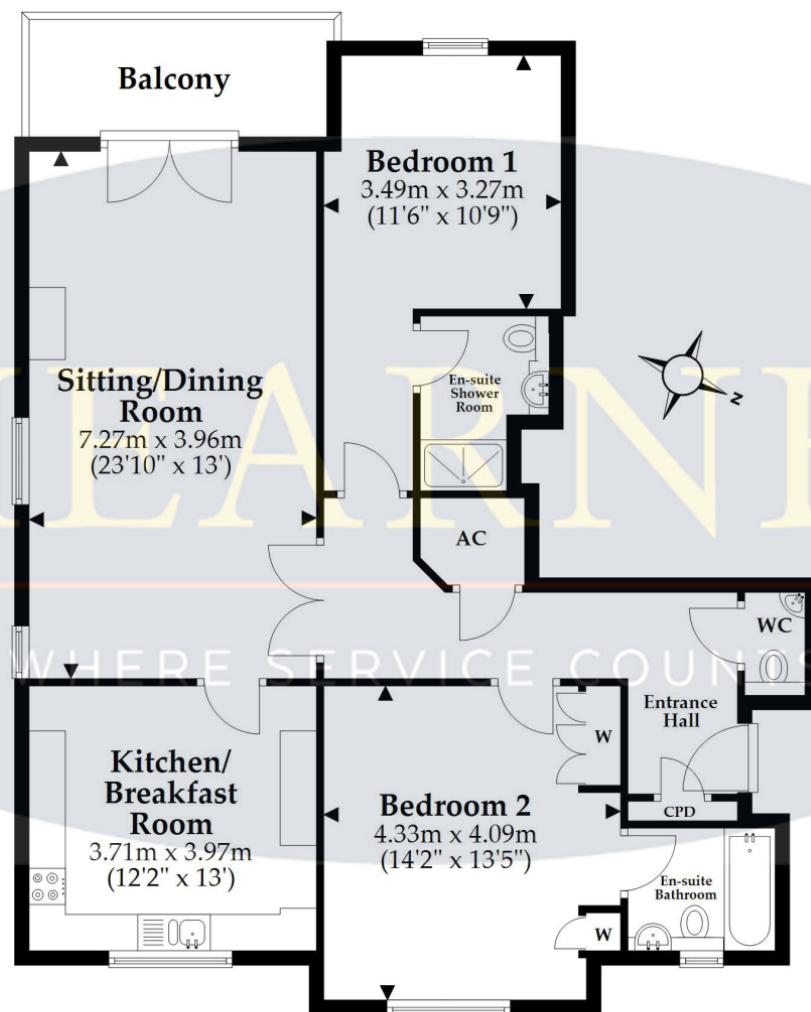
Outside are simply stunning private communal grounds with uninterrupted views over the lake giving a wonderful private and exclusive feel.





## First Floor

Approx. 100.0 sq. metres (1075.8 sq. feet)



Total area: approx. 100.0 sq. metres (1075.8 sq. feet)

This plan is not to scale and is for general guidance only. LJT Surveying Ltd Ringwood



52-54 High Street, Ringwood, Hampshire Tel : Email : [anthony@hearnes.com](mailto:anthony@hearnes.com) [www.hearnes.com](http://www.hearnes.com)

OFFICES ALSO AT: BOURNEMOUTH, FERNDOWN, POOLE & WIMBORNE





Grounds and general view

