



Sycamore Avenue, Hatfield, AL10 8LZ

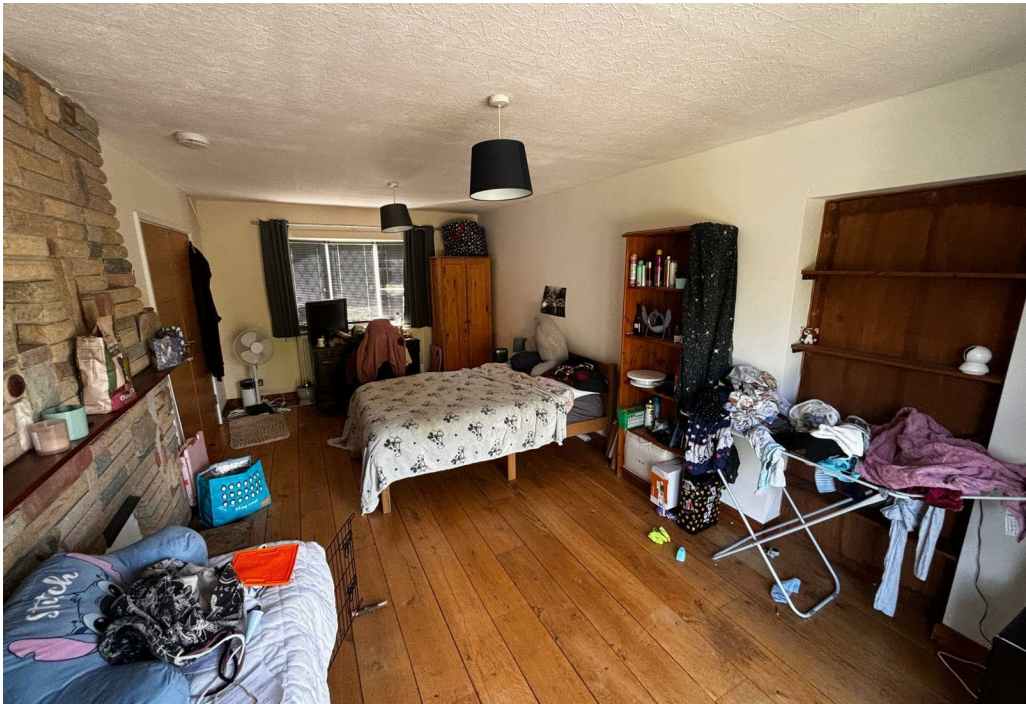
Bungalow - Detached | 3 Bedrooms

£699,950 Freehold

**LARKHAM  
PIKE** &

[www.larkhamandpike.co.uk](http://www.larkhamandpike.co.uk)







Entrance Hall

Dinning Area

16'9" x 9'9"  
Double glazed window to front and double doors opening into lounge and opening into:

Kitchen

10'0" x 12'2"  
Fitted kitchen with a range of wall and base mounted cupboards and drawer units and worktops over and central peninsular. Two and a half bowl single drainer sink unit with mixer taps. Built in gas hob with extractor, double oven, plumbing for washing machine and built in fridge and freezer. Tiled floor. UPVC double glazed window and door to rear.

Bedroom Four/Lounge

10'11" x 19'9"  
Double glazed window to front and Bi-folding doors to rear. Radiator and feature brick fire place.

Hallway

Access to loft with pull down loft ladder. Loft is boarded with two double glazed windows and light and power. Doors to:

Bedroom One

14'7" x 9'8"  
Double glazed window to rear and radiator.

Bedroom Two

11'2" x 9'9"  
Double glazed window to front and radiator.

Bedroom Three

9'7" x 7'10"  
Double glazed window to rear, radiator and built in wardrobe.

Bathroom

White bathroom suite comprising of a bath with with mixer taps and shower unit. Vanity wash hand basin, partly tiled walls and fully tiled floor. Heated towel rail. UPVC double glazed frosted window to rear.

Garage

Front storage area with internal door opening into:

Office

Window to side and door to rear. Door to:

WC

Low level WC, wall mounted wash hand basin and door to rear

Rear Garden

Mature rear garden with patio area and further decked area. Summer house with double glazed doors and two further sheds. Remainder laid to lawn with mature shrubs and trees. Pathway access to the front.

Front Garden

Block paved driveway providing parking. Remainder lawn with mature shrubs.

