



Walsingham Close, Herts, AL10 0RR


Flat | 2 Bedrooms

£1,350 Per Calendar Month

**LARKHAM
PIKE** &

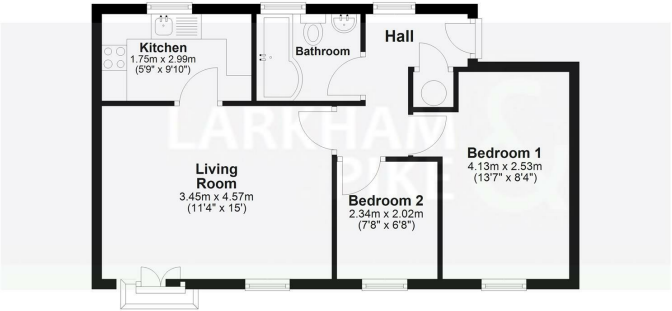
www.larkhamandpike.co.uk



Energy Efficiency Rating		
	Current	Potential
Very energy efficient - lower running costs		
(92 plus) A		
(81-91) B		
(69-80) C	75	77
(55-68) D		
(39-54) E		
(21-38) F		
(1-20) G		
Not energy efficient - higher running costs		
England & Wales	EU Directive 2002/91/EC	

Second Floor

Approx. 47.0 sq. metres (505.4 sq. feet)



Total area: approx. 47.0 sq. metres (505.4 sq. feet)

Sketch layout only.
This plan is not drawn to scale and is for identification purposes only. Produced for Larkham & Pikes
Estate Agents.
Plan produced using PlanUp.