



Badger Way, Hatfield, AL10 8RY


House - Mid Terrace | 4 Bedrooms

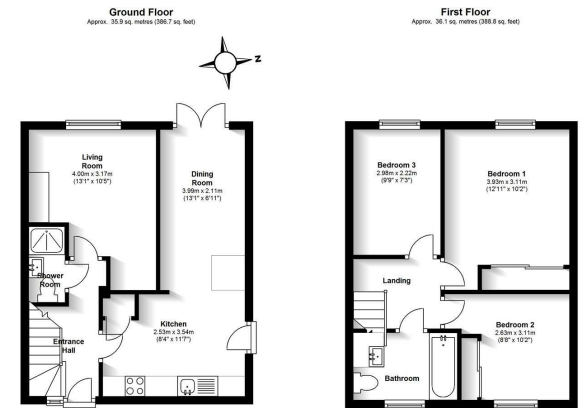
£2,000 Per Calendar Month

LARKHAM
PIKE &

www.larkhamandpike.co.uk



Energy Efficiency Rating		
	Current	Potential
Very energy efficient - lower running costs		
(92 plus) A		88
(81-91) B		
(69-80) C	73	
(55-68) D		
(39-54) E		
(21-38) F		
(1-20) G		
Not energy efficient - higher running costs		
England & Wales	EU Directive 2002/91/EC	



Total area: approx. 72.0 sq. metres (775.5 sq. feet)
 Sketch layout only. This plan is not drawn to scale and is for identification purposes only.
 Plan produced using The Mobile Agent.