



New Road, Welwyn Garden City, AL8


Maisonette - Upper | 1 Bedrooms

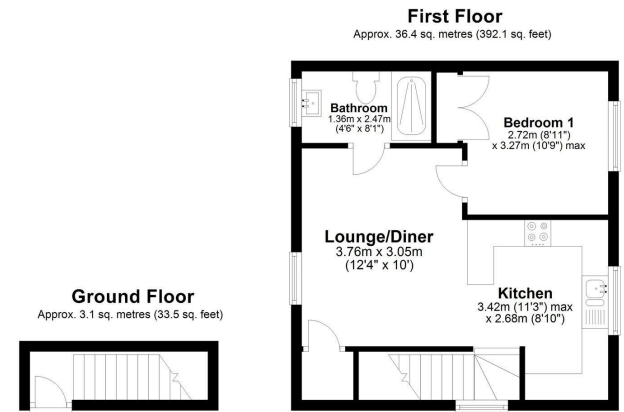
£1,200 Per Month

**LARKHAM
PIKE** &

www.larkhamandpike.co.uk



Energy Efficiency Rating		
	Current	Potential
Very energy efficient - lower running costs		
(92 plus) A		
(81-91) B	82	82
(69-80) C		
(55-68) D		
(39-54) E		
(21-38) F		
(1-20) G		
Not energy efficient - higher running costs		
England & Wales	EU Directive 2002/91/EC	



Total area: approx. 39.5 sq. metres (425.6 sq. feet)