



Haseldine Meadows, Hatfield, AL10 8HB

House - Terraced | 4 Bedrooms

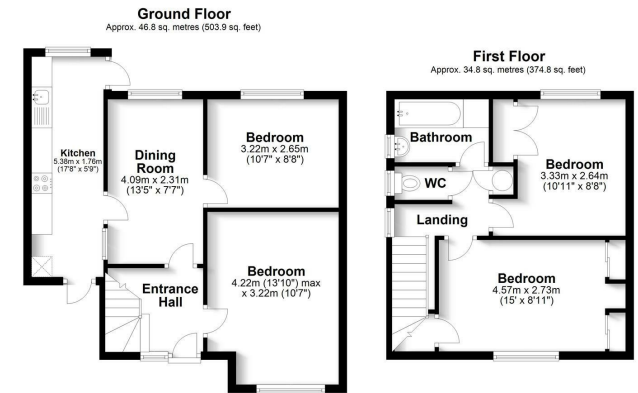
£2,000 PCM

**LARKHAM
PIKE** &

www.larkhamandpike.co.uk



Energy Efficiency Rating		
	Current	Potential
Very energy efficient - lower running costs		
(92 plus) A		<div style="text-align: center;"> 85 </div>
(81-91) B		
(69-80) C		
(55-68) D	66	
(39-54) E		
(21-38) F		
(1-20) G		
Not energy efficient - higher running costs		
England & Wales	EU Directive 2002/91/EC	



Total area: approx. 81.6 sq. metres (878.7 sq. feet)

Sketch layout only. This plan is not drawn to scale and is for identification purposes only.
Plan produced using PlanUp.