



Bishops Rise, Hatfield, AL10 9HQ


House | 4 Bedrooms

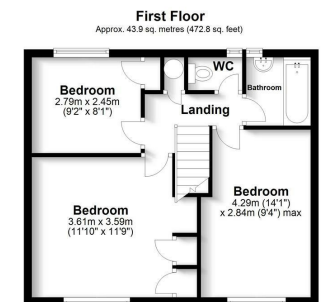
£1,800 Per Month

LARKHAM
PIKE &

www.larkhamandpike.co.uk



Energy Efficiency Rating		
	Current	Potential
Very energy efficient - lower running costs		
(92 plus) A		
(81-91) B		
(69-80) C		
(55-68) D		
(39-54) E		
(21-38) F		
(1-20) G		
Not energy efficient - higher running costs		
England & Wales	EU Directive 2002/91/EC	



Total area: approx. 94.2 sq. metres (1014.3 sq. feet)

For identification purposes only. Not to scale.
Plan produced using PlanUp.