



Town Centre, Hatfield, AL10 0JL

Maisonette | 3 Bedrooms

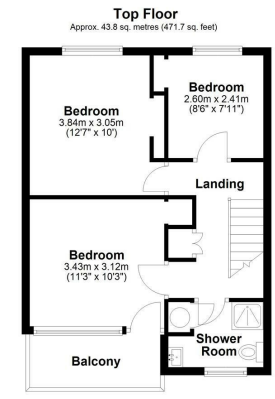
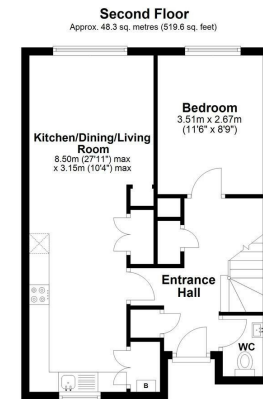
£225,000 Leasehold

**LARKHAM
PIKE &**

www.larkhamandpike.co.uk



Energy Efficiency Rating		
	Current	Potential
Very energy efficient - lower running costs		
(92 plus) A		
(81-91) B		80
(69-80) C		
(55-68) D	54	
(39-54) E		
(21-38) F		
(1-20) G		
Not energy efficient - higher running costs		
England & Wales	EU Directive 2002/91/EC	



Total area: approx. 92.1 sq. metres (991.3 sq. feet)

Sketch layout only.
This plan is not drawn to scale and is for identification purposes only. Produced for Larkham & Pikes Estate Agents.
Plan produced using PlanUp.