



St. Audreys Close, Hatfield, AL10 8UW


House - Mid Terrace | 3 Bedrooms

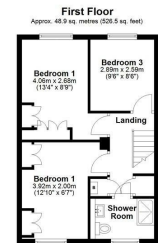
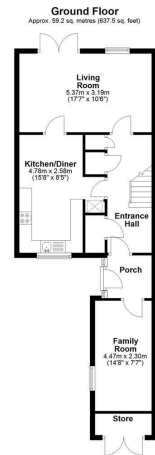
£395,000 Freehold

LARKHAM
PIKE &

www.larkhamandpike.co.uk



Energy Efficiency Rating		
	Current	Potential
Very energy efficient - lower running costs		
(92 plus) A		<div style="text-align: center;"> 71 84 </div>
(81-91) B		
(69-80) C		
(55-68) D		
(39-54) E		
(21-38) F		
(1-20) G		
Not energy efficient - higher running costs		
England & Wales	EU Directive 2002/91/EC	



Total area: approx. 106.1 sq. metres (1164.0 sq. feet)
Sketches represent the plan as well shown to scale and to be distributed as per the Protocol for Landmark & Print Data Agency.
 Plans produced using PlanCAD.