



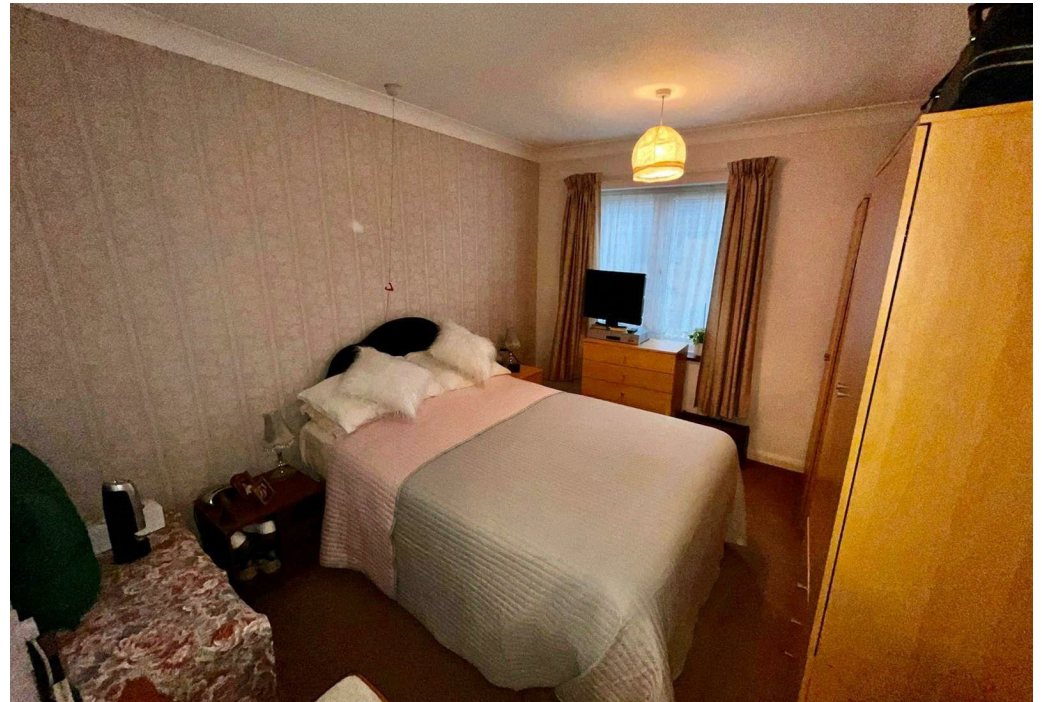
Ashley Court, Hatfield, AL10 0RW


Flat | 2 Bedrooms

£185,000 Leasehold

**LARKHAM
PIKE &**

www.larkhamandpike.co.uk



Energy Efficiency Rating		
	Current	Potential
Very energy efficient - lower running costs		
(92 plus) A		
(81-91) B	81	84
(69-80) C		
(55-68) D		
(39-54) E		
(21-38) F		
(1-20) G		
Not energy efficient - higher running costs		
England & Wales	EU Directive 2002/91/EC	



Total area: approx. 54.8 sq. metres (590.3 sq. feet)

Sketch layout only. This plan is not drawn to scale and is for identification purposes only. Produced for Larkham & Pikes Estate Agents. Plan produced using PlanUp.