

**Lansdowne Street
Hillfields
£550 Per Calendar Month**



This bright and well-presented single room offers comfortable and private living within a beautifully maintained shared home. Located on the ground floor at the front of the property, the room comes fully furnished with a single bed, wardrobe, desk, and chair, perfect for students or professionals seeking a convenient base. The private en-suite shower room adds a touch of comfort and independence.

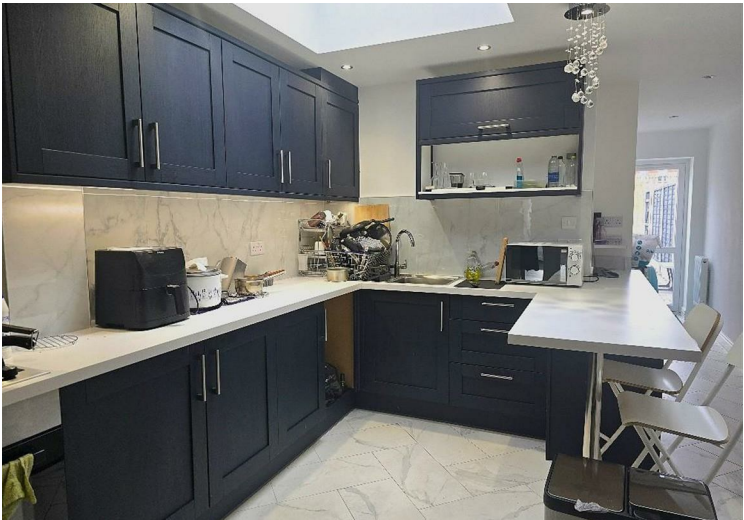
Residents also benefit from access to a spacious communal kitchen and dining area, fully equipped with modern appliances including an integrated electric oven, gas hob, two fridge freezers, and a dining table with chairs. There are also external washing and drying facilities, a handy outdoor W.C., and a tidy communal garden area ideal for relaxation.

Situated in a popular and well-connected area of Coventry, the property is close to local shops, amenities, and transport links, offering easy access to the city centre, Coventry University, and major routes across the West Midlands.

All bills are included.

Available: Now

- EPC Rating: D
- Ground Floor Single Bedroom
- En-Suite Shower Room
- Communal Kitchen and Dining Area
- Communal Washing Machine and Drying Area
- Communal Rear Garden
- Inclusive of Bills
- Convenient Location
- Street Parking



PLEASE NOTE: General Information
 All measurements are approximate and quoted in metric and are for general guidance only and whilst every attempt has been made to ensure accuracy, they must not be relied on. The fixture, fittings and appliances referred to have not been tested and therefore no guarantee can be given that they are in working order. Internal photos are produced for internal general information and it must not be inferred that any item would be included within the rental.

