

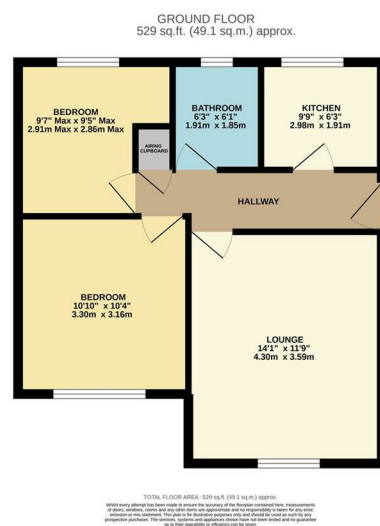


**Drapers Fields
Canal Basin
Asking Price £130,000**



Leasehold - 161 Years Remaining
Ground Rent - £60 Per Annum
Management Fee - £105.00 per month

- EPC Rating: D
- Ground Floor Flat
- 2 Double Bedrooms
- Fitted Kitchen With Integrated Electric Oven
- Conveniently Located for Coventry City Centre
- Canalside Views
- Off Road Parking
- No Upward Chain
- Leasehold - Approx 161 Years Remaining
- 360 Tour



PLEASE NOTE: General Information

We have been informed by the vendor that the tenure of the property is Leasehold. However, you are recommended to have this information verified by your legal advisor at the earliest opportunity. All measurements are approximate and quoted in metric and are for general guidance only and whilst every attempt has been made to ensure accuracy, they must not be relied on. The fixture, fittings and appliances referred to have not been tested and therefore no guarantee can be given that they are in working order. Internal photos are produced for internal general information and it must not be inferred that any item would be included within the sale.

Elite Property
Sterling House, 112 Walsgrave Road, Stoke, Coventry, West Midlands, CV2 4ED
Tel: 024 7665 2200
www.eliteproperty.co

