

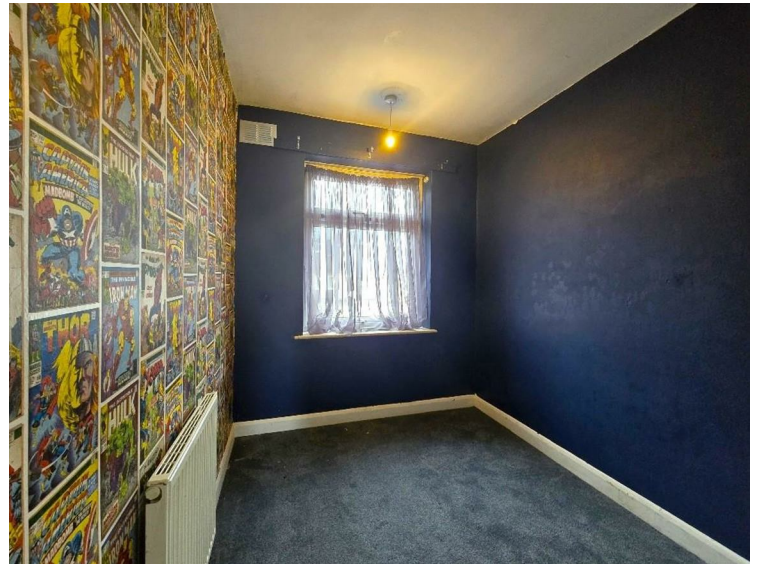
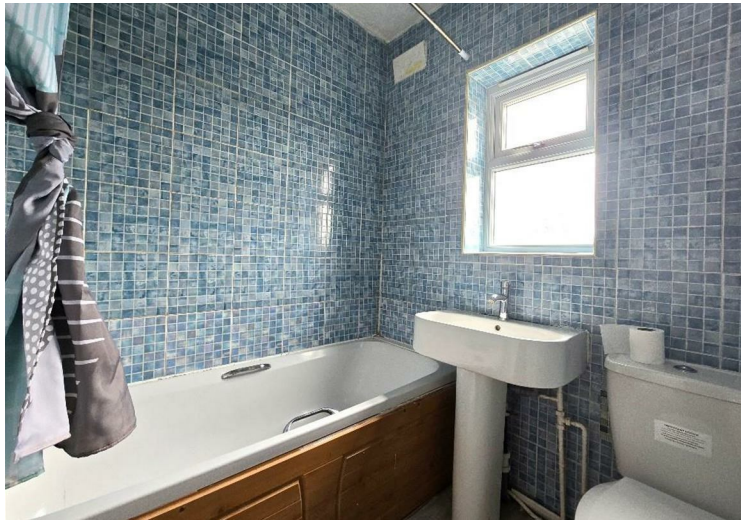
**Clovelly Road
Wyken
£1,100 PCM**



A 3-bedroom mid-terrace house is available to let on an unfurnished basis in the Wyken area of Coventry. The property features an entrance hallway, a through lounge/dining room, a fitted kitchen, a first-floor bathroom with a shower, two double bedrooms, and one single bedroom. Additional benefits include gas central heating, double glazing, front and rear gardens, and a rear garage. The property is conveniently located near primary and secondary schools and offers easy access to Coventry & Warwickshire University Hospital.

- EPC Rating: E
- Unfurnished
- Mid-Terrace House
- Through Lounge/Dining Room
- First Floor Bathroom
- Three Bedrooms
- Front & Rear Gardens
- Rear Garage
- Convenient Location
- Council Tax: B

Available: From 9th July 2024



PLEASE NOTE: General Information

All measurements are approximate and quoted in metric and are for general guidance only and whilst every attempt has been made to ensure accuracy, they must not be relied on. The fixture, fittings and appliances referred to have not been tested and therefore no guarantee can be given that they are in working order. Internal photos are produced for internal general information and it must not be inferred that any item would be included within the rental.

Elite Property

Sterling House, 112 Walsgrave Road, Stoke, Coventry, West Midlands, CV2 4ED

Tel: 024 7665 2200

www.eliteproperty.co

