

**Goring Road
Stoke
Asking Price £118,000**

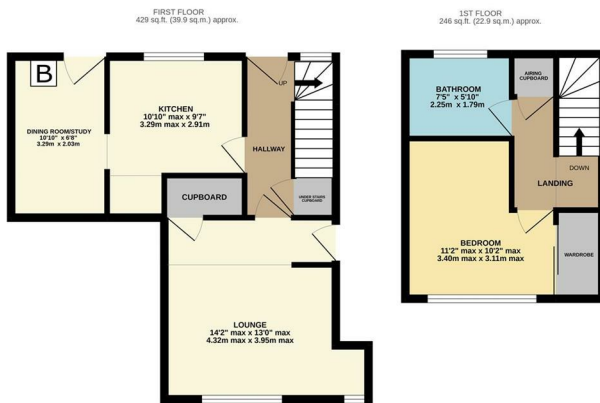


A well presented and larger than average, top floor duplex maisonette located in the Stoke area of Coventry.

The property briefly comprises of: Lounge, fitted kitchen, separate dining room/study with access to the balcony. Family bathroom with shower and 1 double bedroom with built in wardrobe.

The property also benefits from gas central heating and double glazing.

- EPC Rating: D
- Top Floor Duplex Maisonette
- Ideal Investment or First Time Buy Purchase
- Currently Rented at £545.00pcm
- Gas Central Heating & Double Glazing
- Lounge & Seperate Dining Room/Study
- One Double Bedroom
- Balcony
- Leasehold - 110 Years Remaining
- Close To Local Shopping Amenities & Bus Routes



PLEASE NOTE: General Information

We have been informed by the vendor that the tenure of the property is Leasehold. However, you are recommended to have this information verified by your legal advisor at the earliest opportunity. All measurements are approximate and quoted in metric and are for general guidance only and whilst every attempt has been made to ensure accuracy, they must not be relied on. The fixture, fittings and appliances referred to have not been tested and therefore no guarantee can be given that they are in working order. Internal photos are produced for internal general information and it must not be inferred that any item would be included within the sale.

Elite Property

Sterling House, 112 Walsgrave Road, Stoke, Coventry, West Midlands, CV2 4ED

Tel: 024 7665 2200

www.eliteproperty.co

