

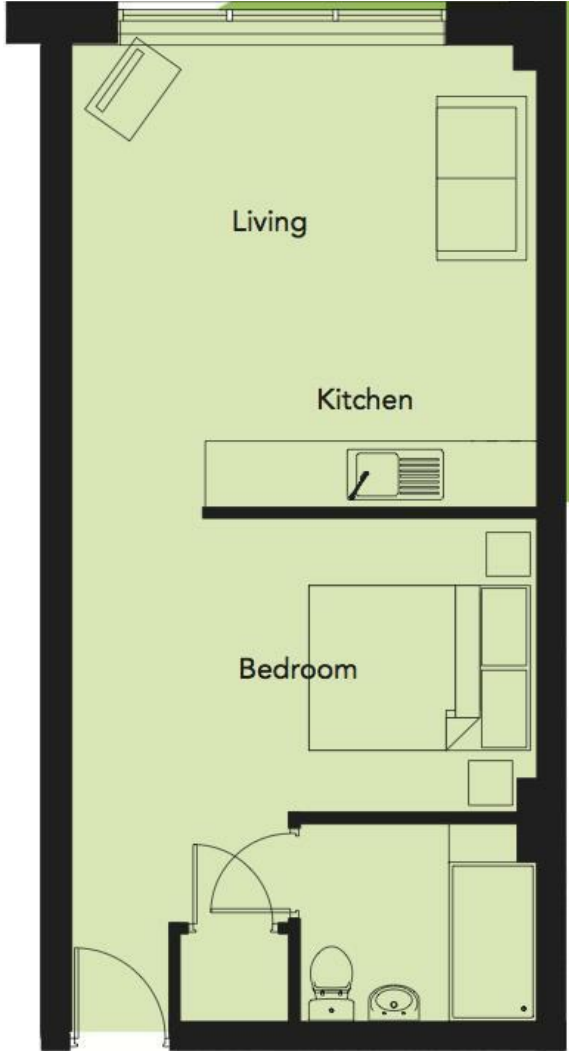


© CARNEGIE PHOTOGRAPHY

Bellmont Lodge, Welwyn Garden City, AL7 1FX



Carnegie



# ACCOMMODATION

- Bedroom area
- Living/dining room
- Kitchen
- Shower room
- High ceilings
- Recently built
- Furnished
- Close to Shire Park
- Allocated parking
- Large entrance foyer



Energy Efficiency Rating		Environmental Impact (CO <sub>2</sub> ) Rating	
Very energy efficient - lower running costs	Current	Very environmentally friendly - lower CO <sub>2</sub> emissions	Current
(92 plus) <b>A</b>		(92 plus) <b>A</b>	
(81-91) <b>B</b>		(81-91) <b>B</b>	
(69-80) <b>C</b>		(69-80) <b>C</b>	
(55-68) <b>D</b>	60	(55-68) <b>D</b>	64
(39-54) <b>E</b>		(39-54) <b>E</b>	
(21-38) <b>F</b>		(21-38) <b>F</b>	
(1-20) <b>G</b>		(1-20) <b>G</b>	
Not energy efficient - higher running costs		Not environmentally friendly - higher CO <sub>2</sub> emissions	
England & Wales	EU Directive 2002/91/EC	England & Wales	EU Directive 2002/91/EC



Handside House, 131 Handside Lane, Welwyn Garden City, AL8 6TA  
 Tel: 01707 330373  
 E: post@carnegieuk.com  
 www.carnegieuk.com

IMPORTANT: we would like to inform prospective purchasers that these sales particulars have been prepared as a general guide only. A detailed survey has not been carried out, nor the services, appliances and fittings tested. Room sizes should not be relied upon for furnishing purposes and are approximate. If floor plans are included, they are for guidance only and illustration purposes only and may not be to scale. If there are any important matters likely to affect your decision to buy, please contact us before viewing the property.