



## Mulgrave Road, Ealing, London W5 1LE

### Price £1,070,000 Freehold - No Chain

**A 4-5-bedroom end-of-terrace house on three floors with west-facing rear garden, garage at the rear and forecourt parking for 2 cars.**

The property comprises entrance hall, dual aspect double reception room, fitted kitchen, 4 bedrooms, family bathroom, separate WC, en suite bathroom and a study / bedroom 5.

Outside is a west-facing rear lawn garden of approx 62ft with paved terrace, garage at the rear and forecourt parking for 2 cars.

Situated on the favoured **Greystoke Park Estate**, in the **Brunswick** conservation area, just a few minutes' walk to **Hanger Lane** station with local shopping facilities and also well-placed for **Park Royal** station also with local shopping facilities. Several bus routes are nearby including for **Ealing Broadway** station with Elizabeth Line connection & town centre. The beautiful open space of Hanger Hill park is nearby. Also with access to the M4 & M40 motorways. Well-paced for a number of local schools including St Benedict's, St Augustine's Priory, Montpelier Primary, Ada Lovelace CofE High, St Gregory's Primary, Ellen Wilkinson High, Notting Hill & Ealing High and





## Mulgrave Road, London, W5

Approximate Area = 1578 sq ft / 146.6 sq m

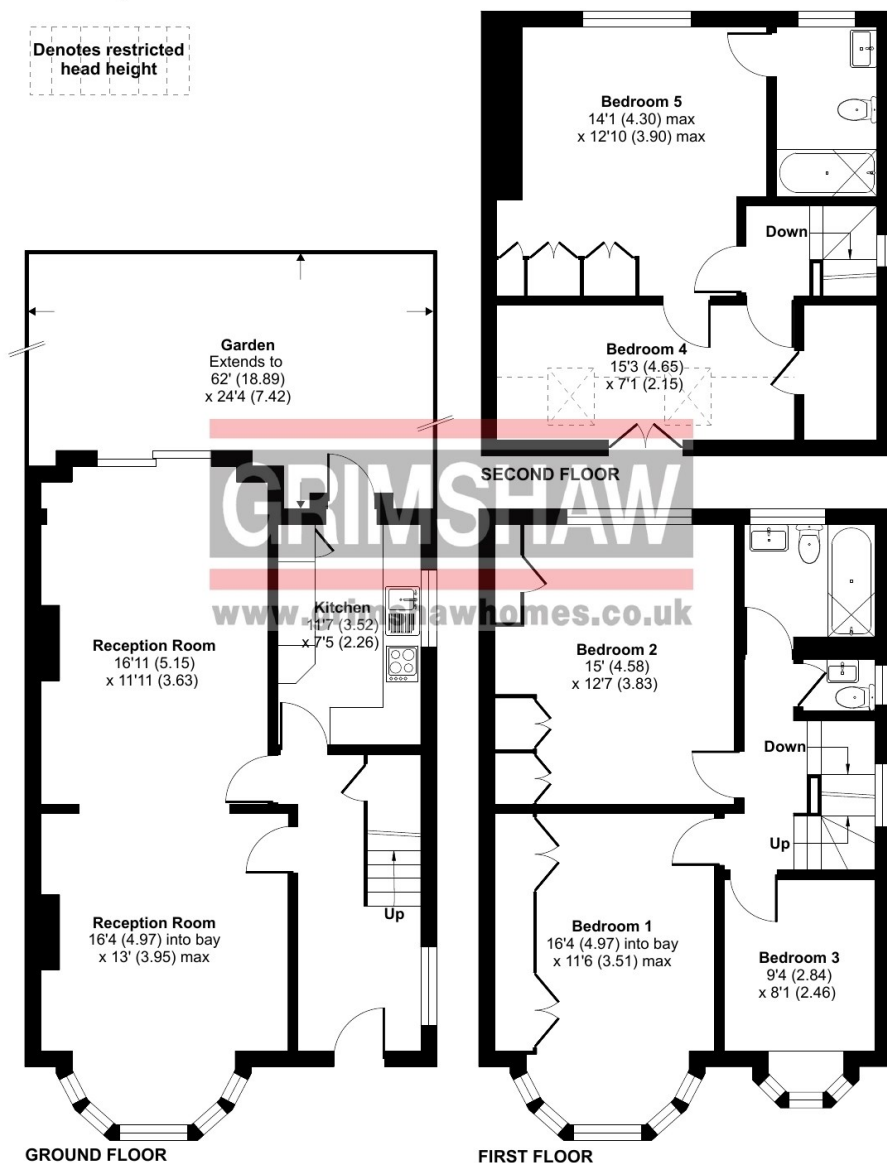
Limited Use Area(s) = 51 sq ft / 4.7 sq m

Total = 1629 sq ft / 151.3 sq m

For identification only - Not to scale



Denotes restricted head height



**RICS** Certified Property Measurer  
Floor plan produced in accordance with RICS Property Measurement Standards incorporating International Property Measurement Standards (IPMS2 Residential). © nrichcom 2024.  
Produced for Grimshaw & Co. REF: 1187710

EPC Rating = C

Council tax band = F (subject to confirmation)

**VIEWING BY APPOINTMENT - All negotiations should be conducted through Grimshaw & Company, who will be pleased to arrange appointments and provide further information.**

Any reference to the term "period" denotes period-style. Services, heating, appliances, any security and drainage systems have not been tested. Internal photographs are reproduced for general information only and it must not be inferred that any item shown therein is included with the property. Where double-glazing is mentioned, it must not be inferred that each and every door and window in the property is double-glazed. Trade Names: Where trade names are mentioned, you are advised to verify these with the vendor to your own satisfaction. All property measurements are approximate and have been taken with an electronic tape into bays and alcoves as appropriate. These particulars do not form part of any offer or contract nor can their accuracy be relied upon by purchasers, who should satisfy themselves by inspection or otherwise. Neither Grimshaw & Company nor any person in their employment has any authority to make or give any warranty whatever in relation to any property. No responsibility can be accepted for any loss of expenses incurred in viewing in relation to any property.

21.07.2025 Ref: 9896

Grimshaw and Co, 5 Station Parade, Ealing Common, London W5 3LD

**GRIMSHAW**  
www.grimshawhomes.co.uk