

MARTIN MASLIN

**PLOT 149
NEW DEVELOPMENT
LAND OFF FIELD HEAD ROAD
LACEBY
GRIMSBY
DN37 7SS**



COMING SOON!

AN EXCITING OPPORTUNITY TO ACQUIRE AN IMPRESSIVE DETACHED BUNGALOW DESIGNED FOR THE OVER 55'S. WELL DESIGNED INCLUDING A STUNNING OPEN PLAN LIVING DINING KITCHEN WITH A SIGNITURE FEATURE WINDOW, THREE GOOD SIZED BEDROOMS AND TWO BATHROOMS. PLOT 149 OCCUPIES A LOVELY POSITION WITH AN EAST FACING REAR GARDEN OVERLOOKING AN OPEN SPACE TO ONE SIDE WITH A GREEN AREA AND TREES. THERE WILL BE AN ATTACHED GARAGE WITH A PRIVATE DRIVEWAY.

£385,000

VIEWING STRICTLY BY PRIOR APPOINTMENT WITH VENDOR'S SOLE AGENTS

www.martinmaslinestateagents.co.uk

The Property

Situated in the popular village of Laceby, this exceptional new development brings a mix of beautifully designed semi detached house, spacious bungalows and elegant detached homes. Built by one of the regions most trusted and reputable new developers WJC Developments, this new development of high quality construction, thoughtful layout and modern amenities will create a neighbourhood to suite every lifestyle.

A perfect Location just a short drive from Grimsby and within easy reach of the A180. The new Laceby development offers both tranquility and convenience. Enjoy the village life with the added benefit of the countryside on your doorstep providing excellent walks. Features to wall in love with, weather you require single storey living in a bungalow or the extra space in a detached home, there is a variety of layouts offering something for everyone. Contemporary interiors all equipped with sleek modern kitchens, stylish bathrooms, and spacious living areas to make life comfortable and enjoyable.

Beautiful outdoor spaces, private gardens with plenty of green spaces and tree lined streets make this new Laceby development a scenic and inviting community. A unique opportunity don't miss the chance to become part of this new Laceby development with limited plots available. This development is in high demand. Discover your dream home in a welcoming vibrant neighbourhood. Secure your plot today!

Plot 149 is an exciting opportunity to acquire and impressive detached bungalow designed for the over 55's. Well designed including a stunning open plan Living Dining Kitchen with signature feature window, three good sized bedrooms and two bathrooms. The property enjoys a good sized plot with an east facing rear garden, attached garage and private driveway.

For further information or to book a viewing contact Martin Maslin Estate Agents on Grimsby 311000.



Front Elevation

1:100



Rear Elevation

1:100



Side Elevation

1:100



Side Elevation

1:100

Accommodation

All measurements are approximate.

ENTRANCE HALL

4.09m (13'5") x 1.98m (6'6")

With a smart composite front entrance door.

INNER HALL

3.99m (13'1") x 0.97m (3'2")

LOUNGE

5.56m (18'3") INTO BAY x 3.86m (12'8")

With a fireplace and uPVC double glazed front window.

LIVING KITCHEN

7.16m (23'6") x 3.86m (12'8")

A lovely open plan Living Kitchen with two double glazed side windows, a feature apex double glazed window to the rear and further double glazed window in the dining area.

OPEN PLAN DINING AREA

3.28m (10'9") x 3.17m (10'5")

BEDROOM ONE

4.70m (15'5") INTO BAY x 3.66m (12'0")

With a walk in double glazed bay front window.

EN-SUITE SHOWER ROOM

2.59m (8'6") x 1.22m (4'0")

With a double glazed side window.

BEDROOM TWO

3.66m (12'0") x 3.20m (10'6")

With double glazed patio doors to the rear.

BEDROOM THREE

3.00m (9'10") x 2.82m (9'3")

With a double glazed front window.

BATHROOM

1.70m (5'7") x 2.59m (8'6") 10'10" INTO RECESS

GARAGE

5.59m (18'4") x 2.79m (9'2")

A brick attached garage.

GARDENS

The gardens will be landscaped and seeded with fencing to the perimeter. The property will enjoy a north-east facing garden.

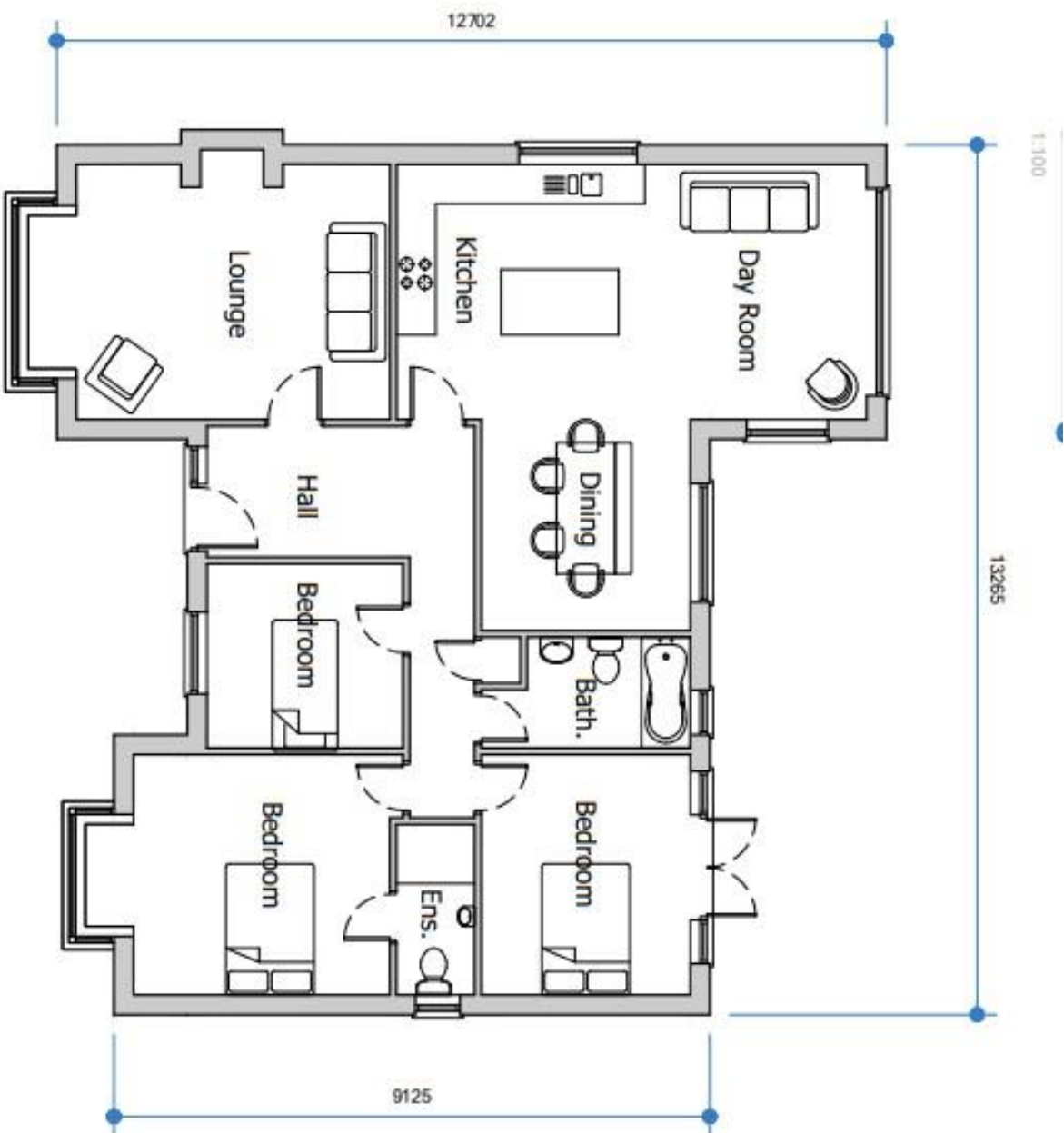
TENURE

We have been advised that the tenure is freehold and understand that a management company will be set up to cover the running cost of maintenance in common areas.

SPECIFICATION DETAILS

All the properties will be completed to a bespoke finish by WJC Developments including the following:

- Underfloor heating connected to a gas central heating boiler
- uPVC double glazed windows in a white exterior finish
- Smart fitted composite front door and uPVC patio/bifold doors as per design -LED lighting
- Flooring included in the kitchen only
- Oak interior doors with chrome finish
- High quality bespoke kitchen from Huws Gray with a choice of design and colour including worktops (upgrade to quartz available upon request)
- Bathrooms will comprise W.C, vanity wash basin, panel bath with shower over and part tiled walls
- Emulsion walls with white skirting boards and architraves
- Front seeded garden with a porcelain pathway to the front door
- All gardens seeded and landscaped
- Fitted wired smoke alarms
- Outside wall lights and an outside tap
- Driveway paved to the garage
- Solar panels and EV charging points (available by separate negotiation)
- 10 year builders warranty with Sutherland Consulting



Ground Floor Plan

1:100

NO.	REVISION	DATE
1	ISSUED FOR PERMITTING	01/11/2011
2	REVISION TO PERMITTING	01/11/2011
3	REVISION TO PERMITTING	01/11/2011
4	REVISION TO PERMITTING	01/11/2011
5	REVISION TO PERMITTING	01/11/2011
6	REVISION TO PERMITTING	01/11/2011
7	REVISION TO PERMITTING	01/11/2011
8	REVISION TO PERMITTING	01/11/2011
9	REVISION TO PERMITTING	01/11/2011
10	REVISION TO PERMITTING	01/11/2011
11	REVISION TO PERMITTING	01/11/2011
12	REVISION TO PERMITTING	01/11/2011
13	REVISION TO PERMITTING	01/11/2011
14	REVISION TO PERMITTING	01/11/2011
15	REVISION TO PERMITTING	01/11/2011
16	REVISION TO PERMITTING	01/11/2011
17	REVISION TO PERMITTING	01/11/2011
18	REVISION TO PERMITTING	01/11/2011
19	REVISION TO PERMITTING	01/11/2011
20	REVISION TO PERMITTING	01/11/2011
21	REVISION TO PERMITTING	01/11/2011
22	REVISION TO PERMITTING	01/11/2011
23	REVISION TO PERMITTING	01/11/2011
24	REVISION TO PERMITTING	01/11/2011
25	REVISION TO PERMITTING	01/11/2011
26	REVISION TO PERMITTING	01/11/2011
27	REVISION TO PERMITTING	01/11/2011
28	REVISION TO PERMITTING	01/11/2011
29	REVISION TO PERMITTING	01/11/2011
30	REVISION TO PERMITTING	01/11/2011
31	REVISION TO PERMITTING	01/11/2011
32	REVISION TO PERMITTING	01/11/2011
33	REVISION TO PERMITTING	01/11/2011
34	REVISION TO PERMITTING	01/11/2011
35	REVISION TO PERMITTING	01/11/2011
36	REVISION TO PERMITTING	01/11/2011
37	REVISION TO PERMITTING	01/11/2011
38	REVISION TO PERMITTING	01/11/2011
39	REVISION TO PERMITTING	01/11/2011
40	REVISION TO PERMITTING	01/11/2011
41	REVISION TO PERMITTING	01/11/2011
42	REVISION TO PERMITTING	01/11/2011
43	REVISION TO PERMITTING	01/11/2011
44	REVISION TO PERMITTING	01/11/2011
45	REVISION TO PERMITTING	01/11/2011
46	REVISION TO PERMITTING	01/11/2011
47	REVISION TO PERMITTING	01/11/2011
48	REVISION TO PERMITTING	01/11/2011
49	REVISION TO PERMITTING	01/11/2011
50	REVISION TO PERMITTING	01/11/2011
51	REVISION TO PERMITTING	01/11/2011
52	REVISION TO PERMITTING	01/11/2011
53	REVISION TO PERMITTING	01/11/2011
54	REVISION TO PERMITTING	01/11/2011
55	REVISION TO PERMITTING	01/11/2011
56	REVISION TO PERMITTING	01/11/2011
57	REVISION TO PERMITTING	01/11/2011
58	REVISION TO PERMITTING	01/11/2011
59	REVISION TO PERMITTING	01/11/2011
60	REVISION TO PERMITTING	01/11/2011
61	REVISION TO PERMITTING	01/11/2011
62	REVISION TO PERMITTING	01/11/2011
63	REVISION TO PERMITTING	01/11/2011
64	REVISION TO PERMITTING	01/11/2011
65	REVISION TO PERMITTING	01/11/2011
66	REVISION TO PERMITTING	01/11/2011
67	REVISION TO PERMITTING	01/11/2011
68	REVISION TO PERMITTING	01/11/2011
69	REVISION TO PERMITTING	01/11/2011
70	REVISION TO PERMITTING	01/11/2011
71	REVISION TO PERMITTING	01/11/2011
72	REVISION TO PERMITTING	01/11/2011
73	REVISION TO PERMITTING	01/11/2011
74	REVISION TO PERMITTING	01/11/2011
75	REVISION TO PERMITTING	01/11/2011
76	REVISION TO PERMITTING	01/11/2011
77	REVISION TO PERMITTING	01/11/2011
78	REVISION TO PERMITTING	01/11/2011
79	REVISION TO PERMITTING	01/11/2011
80	REVISION TO PERMITTING	01/11/2011
81	REVISION TO PERMITTING	01/11/2011
82	REVISION TO PERMITTING	01/11/2011
83	REVISION TO PERMITTING	01/11/2011
84	REVISION TO PERMITTING	01/11/2011
85	REVISION TO PERMITTING	01/11/2011
86	REVISION TO PERMITTING	01/11/2011
87	REVISION TO PERMITTING	01/11/2011
88	REVISION TO PERMITTING	01/11/2011
89	REVISION TO PERMITTING	01/11/2011
90	REVISION TO PERMITTING	01/11/2011
91	REVISION TO PERMITTING	01/11/2011
92	REVISION TO PERMITTING	01/11/2011
93	REVISION TO PERMITTING	01/11/2011
94	REVISION TO PERMITTING	01/11/2011
95	REVISION TO PERMITTING	01/11/2011
96	REVISION TO PERMITTING	01/11/2011
97	REVISION TO PERMITTING	01/11/2011
98	REVISION TO PERMITTING	01/11/2011
99	REVISION TO PERMITTING	01/11/2011
100	REVISION TO PERMITTING	01/11/2011

SCHEDULE	
PLAN 1 - 41	6
Basement Level	23
Level 1	20
Level 2	3
Level 3	20
Level 4	15
Level 5	15
Level 6	15
Level 7	15
Level 8	15
Level 9	15
Level 10	15
Level 11	15
Level 12	15
Level 13	15
Level 14	15
Level 15	15
Level 16	15
Level 17	15
Level 18	15
Level 19	15
Level 20	15
Level 21	15
Level 22	15
Level 23	15
Level 24	15
Level 25	15
Level 26	15
Level 27	15
Level 28	15
Level 29	15
Level 30	15
Level 31	15
Level 32	15
Level 33	15
Level 34	15
Level 35	15
Level 36	15
Level 37	15
Level 38	15
Level 39	15
Level 40	15
Level 41	15
Level 42	15
Level 43	15
Level 44	15
Level 45	15
Level 46	15
Level 47	15
Level 48	15
Level 49	15
Level 50	15
Level 51	15
Level 52	15
Level 53	15
Level 54	15
Level 55	15
Level 56	15
Level 57	15
Level 58	15
Level 59	15
Level 60	15
Level 61	15
Level 62	15
Level 63	15
Level 64	15
Level 65	15
Level 66	15
Level 67	15
Level 68	15
Level 69	15
Level 70	15
Level 71	15
Level 72	15
Level 73	15
Level 74	15
Level 75	15
Level 76	15
Level 77	15
Level 78	15
Level 79	15
Level 80	15
Level 81	15
Level 82	15
Level 83	15
Level 84	15
Level 85	15
Level 86	15
Level 87	15
Level 88	15
Level 89	15
Level 90	15
Level 91	15
Level 92	15
Level 93	15
Level 94	15
Level 95	15
Level 96	15
Level 97	15
Level 98	15
Level 99	15
Level 100	15


 Planning Department
 1600 La Jolla Village Drive, Suite 200
 San Diego, CA 92161
 (619) 594-4400
 www.sandagov.org

Project Name: **Project 152**
 Project Number: **152**
 Project Date: **01/11/2011**
 Project Status: **03**

Project Name: **Project 152**
 Project Number: **152**
 Project Date: **01/11/2011**
 Project Status: **03**

Project Name: **Project 152**
 Project Number: **152**
 Project Date: **01/11/2011**
 Project Status: **03**

APPROVAL



The Current Development



SERVICES: The services to, and the fittings and appliances within, this property have not been tested and no guarantee can be given as to their condition or suitability for their purpose.

DISCLAIMER: Whilst we endeavour to make our sales details accurate and reliable they should not be relied on as statements or representations of fact and do not constitute part of an offer or contract.

The Seller does not make or give nor do we or our employees have authority to make or give any representation or warranty in relation to the property.

Please contact the office before viewing the property. If there is any point which is of particular importance to you we will be pleased to check the information for you and to confirm that the property

remains available. This is particularly important if you are contemplating travelling some distance to view the property. We would strongly recommend that all the information which we provide about the property is verified by yourself on inspection and also by your conveyancer, especially where statements have been made to the effect that the information provided has not been verified.



24176



Martin Maslin Estate Agents
4/6 Abbey Walk
Grimsby
North East Lincolnshire
DN31 1NB

T: 01472 311000 F: 01472 340200
E: office@martinmaslinestateagents.co.uk
www.martinmaslinestateagents.co.uk

M619 Printed by Ravensworth Digital 0191 2303553