



Bromar Road, SE5 | Offers In Excess Of £350,000

02087028222

eastdulwich@pedderproperty.com

pedder
We live local



In General

- One double bedroom
- Period conversion
- Top floor
- Over 490 Sq Ft
- Excellent condition
- Lovely, Cityscape views

In Detail

Charming and beautifully bright top floor period conversion ideally located on this residential road between Camberwell and East Dulwich.

Boasting almost 500 Sq Ft of internal space which has been lovingly modernised and maintained by the current owner who is looking to upsize nearby. There is a beautifully bright 16x12 open-plan kitchen-reception at the front of the property with high ceilings and large windows offering a spectacular Cityscape view. To the rear there is a modern bathroom with roll-top bathtub and stand-up shower with a comfortable 12x11 double bedroom with built-in wardrobes.

Bromar Road is a popular, tree-lined residential street enviably located for the strong transport links into The City and West End from East Dulwich station (0.3 miles) and Peckham Rye station (0.6 miles) as well as the bus/cycle routes through the neighbouring Denmark Hill, Herne Hill and Dulwich Village.

There are a host of independent shops, bars, restaurants and coffee shops nearby on Bellenden Road and Lordship Lane as well as a choice of parks and green spaces - including the gated Lettsom Gardens.

EPC: D | Council Tax Band: A | Lease: 113 years remaining | SC: £1,200 pa | GR: £200 pa | BI: incl. in SC

1

2

3

4

5

6

7

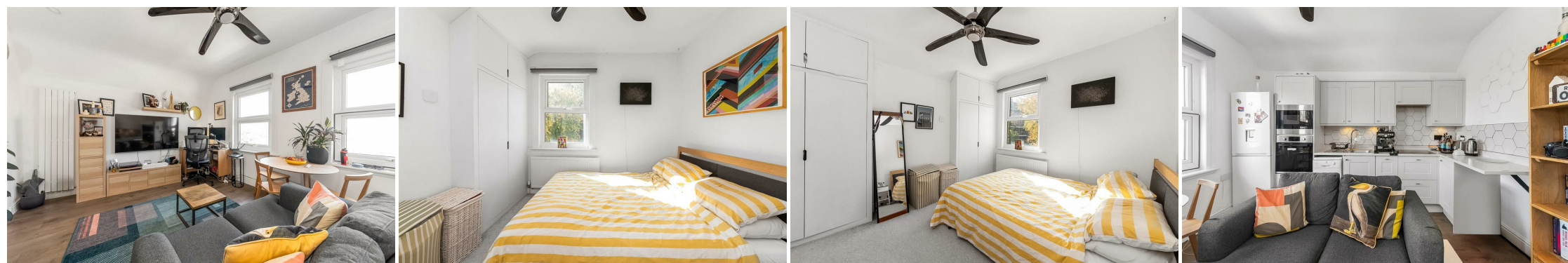
8

9

10

11

12



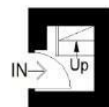
Floorplan

Bromar Road, SE5

Approximate Gross Internal Area
45.8 sq m / 493 sq ft

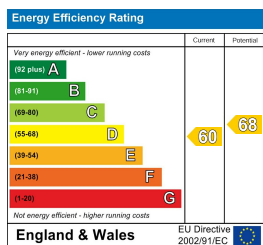


Second Floor



First Floor

Copyright www.pedderproperty.com © 2025
These plans are for representation purposes only
as defined by RICS - Code of Measuring Practice.
Not drawn to Scale. Windows and door openings
are approximate. Please check all dimensions,
shapes and compass bearings before making
any decisions reliant upon them.



Pedder Property Ltd trading as Pedder for themselves and for the vendor/landlord of this property whose agents they are, give notice that (1) these particulars do not constitute any part of an offer or contract, (2) all statements contained within these particulars are made without responsibility on the part of Pedder or the vendor/landlord, (3) whilst made in good faith, none of the statements contained within these particulars are to be relied upon as a statement of representation or fact, (4) any intending purchaser/tenant must satisfy him/herself by inspection or otherwise as to the correctness of each of the statements contained within these particulars, (5) the vendor/landlord does not make or give either Pedder or any person in their employment any authority to make or give representation or warranty whatsoever in relation to this property.