



Playfield Crescent, SE22 | £2,150 Per Calendar
Month

02087028222

eastdulwich@pedderproperty.com

pedder
We live local

In General

- Two double bedrooms
- Additional study / single bedroom
- Shared garden
- Period features
- Fantastic location
- Unfurnished
- Available mid-November

In Detail

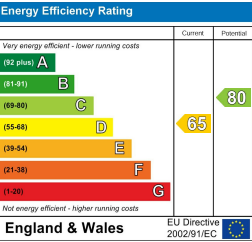
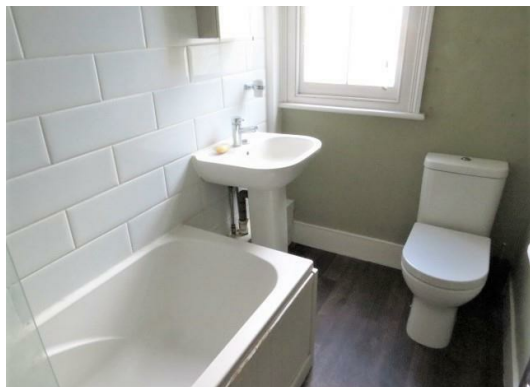
Bright, spacious and well-maintained two bedroom first floor flat on the extremely popular Playfield Crescent SE22, comes with an additional office space and shared garden.

There is excellent storage space and a well-proportioned kitchen and large living room. The property has been finished to a lovely standard with beautiful period features including a feature fireplace and stunning bay window. Other features include access to a loft space.

Playfield Crescent is ideally located for the bars, restaurants and independent shops of Lordship Lane as well as easy access into The City and West End from East Dulwich station (0.5 miles) and a host of bus connections through the neighbouring Herne Hill, Peckham Rye and Forest Hill.

This property is suited to families, couples or professional sharers. Offered unfurnished and available mid-November.

EPC: D | Council Tax Band: C | Unfurnished | Available from: mid-November | HD: £469.15 | SD: £2,480.77



Pedder Property Ltd trading as Pedder for themselves and for the vendor/landlord of this property whose agents they are, give notice that (1) these particulars do not constitute any part of an offer or contract, (2) all statements contained within these particulars are made without responsibility on the part of Pedder or the vendor/landlord, (3) whilst made in good faith, none of the statements contained within these particulars are to be relied upon as a statement of representation or fact, (4) any intending purchaser/tenant must satisfy him/herself by inspection or otherwise as to the correctness of each of the statements contained within these particulars, (5) the vendor/landlord does not make or give either Pedder or any person in their employment any authority to make or give representation or warranty whatsoever in relation to this property.