



Grove Park, SE5 | £1,900,000

02087028222

eastdulwich@pedderproperty.com

pedder
We live local



In General

- Six double bedrooms
- Three bathrooms
- Semi-detached
- Off-street parking
- 98-ft garden laid to lawn
- Potential to extend and modernise STPP
- Camberwell Grove Conservation Area
- CHAIN FREE

In Detail

CHAIN FREE - Charming and characterful large family home on the most desirable of roads enviably-located within the sought-after Camberwell Grove Conservation area.

This substantial six-bedroom, three bathroom semi-detached Edwardian-style property has been in the family for over 100 years - and is reported to have the largest private garden on Grove Park; measuring at 98 ft laid to lawn with mature shrubs and borders.

Boasting over 2,180 Sq Ft of internal space which has retained plenty of the original features, period fireplaces and cornicing - but would benefit from gentle modernisation throughout. There is huge potential to kitchen-extend and re-model subject to planning permission.

There are strong transport links into The City and West End from Denmark Hill station (0.5 miles) and Peckham Rye station (0.6 miles) as well as bus/cycle routes through the neighbouring East Dulwich, Herne Hill and Dulwich Village. There are a choice of gorgeous parks and green spaces - including the private Lettsom Gardens; along with a host of excellent primary, secondary and independent school choices.

The property further benefits from off-street parking and a large basement.

EPC: D | Council Tax Band: G

1

2

3

4

5

6

7

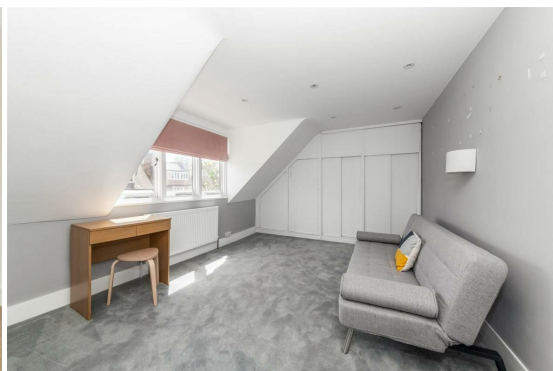
8

9

10

11

12

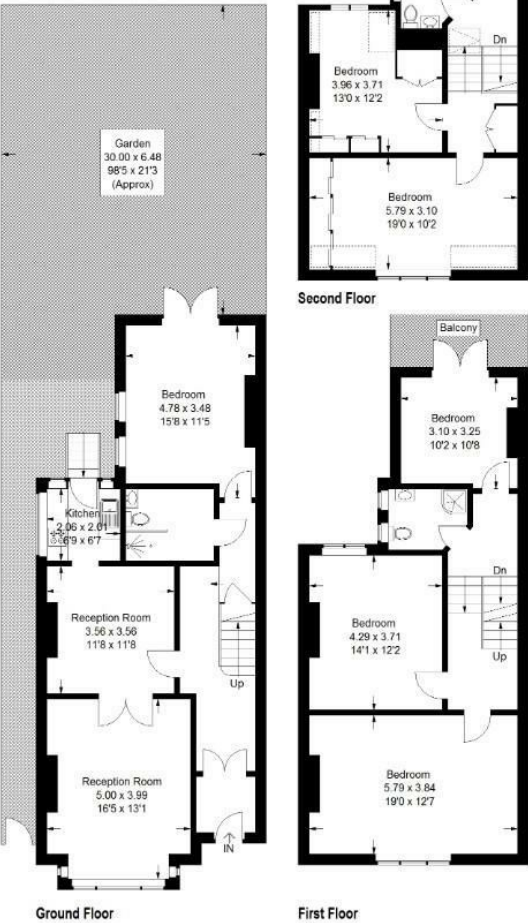


Floorplan

Grove Park, SE5

Approximate Gross Internal Area
203.4 sq m / 2189 sq ft

Reduced headroom below 1.5 m / 5'0"

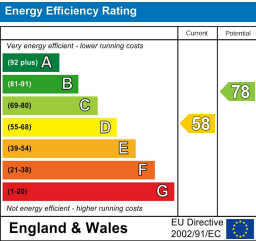


Ground Floor

First Floor

Second Floor

Copyright www.pedderproperty.com © 2025
These plans are for representation purposes only as defined by RICS - Code of Measuring Practice.
Not drawn to Scale. Windows and door openings are approximate. Please check all dimensions,
shapes and compass bearings before making any decisions reliant upon them.



Pedder Property Ltd trading as Pedder for themselves and for the vendor/landlord of this property whose agents they are, give notice that (1) these particulars do not constitute any part of an offer or contract, (2) all statements contained within these particulars are made without responsibility on the part of Pedder or the vendor/landlord, (3) whilst made in good faith, none of the statements contained within these particulars are to be relied upon as a statement of representation or fact, (4) any intending purchaser/tenant must satisfy him/herself by inspection or otherwise as to the correctness of each of the statements contained within these particulars, (5) the vendor/landlord does not make or give either Pedder or any person in their employment any authority to make or give representation or warranty whatsoever in relation to this property.