



Thompson Road, SE22 | £950,000

02087028222

eastdulwich@pedderproperty.com

pedder
We live local



In General

- Three double bedrooms
- Mid-terrace period house
- Over 1,025 Sq Ft
- Potential to loft-extend STPP
- Good condition throughout
- Desirable, residential road

In Detail

Charming, spacious and beautifully bright three bedroom mid-terrace house on this desirable street in the heart of East Dulwich.

Thompson Road is enviably-located for the excellent local schools, parks and green spaces as well as the independent shops, bars, restaurants and coffee shops of Lordship Lane and North Cross Road. There are strong transport links into The City and West End from East Dulwich station (0.9 miles) and Denmark Hill station (1.6 miles) along with bus/cycle routes through the neighbouring Peckham Rye, Dulwich Village and Forest Hill.

Boasting over 1,025 Sq Ft of internal space - the characterful property has been lovingly maintained by the current owner and offers potential to loft extend and side-return subject to planning permission. There is a 13x11 ft bay-fronted reception room with bespoke cabinetry as well as a separate 15-ft dining room. The 18-ft kitchen-breakfast room opens out onto the 16-ft patio garden and large side-return.

Upstairs is the family bathroom and three comfortable double bedrooms - including the 14x11 ft principal bedroom with fitted wardrobes.

EPC : D | Council Tax : D

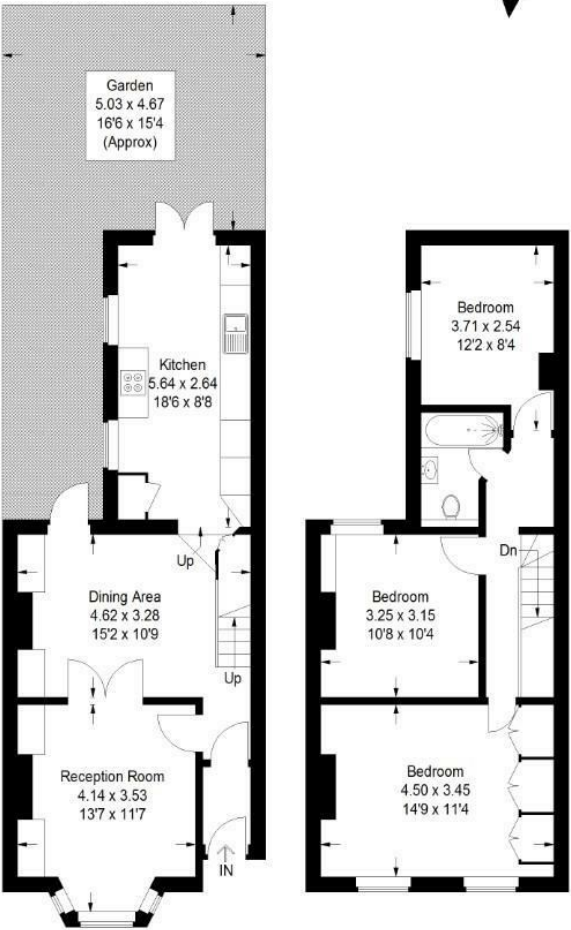
1



Floorplan

Thompson Road, SE22

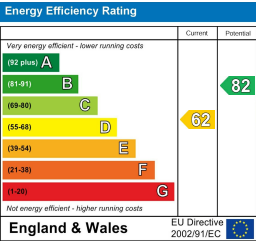
Approximate Gross Internal Area
95.4 sq m / 1027 sq ft



Ground Floor

First Floor

Copyright www.pedderproperty.com © 2025
These plans are for representation purposes only as defined by RICS - Code of Measuring Practice. Not drawn to Scale. Windows and door openings are approximate. Please check all dimensions, shapes and compass bearings before making any decisions reliant upon them.



Pedder Property Ltd trading as Pedder for themselves and for the vendor/landlord of this property whose agents they are, give notice that (1) these particulars do not constitute any part of an offer or contract, (2) all statements contained within these particulars are made without responsibility on the part of Pedder or the vendor/landlord, (3) whilst made in good faith, none of the statements contained within these particulars are to be relied upon as a statement of representation or fact, (4) any intending purchaser/tenant must satisfy him/herself by inspection or otherwise as to the correctness of each of the statements contained within these particulars, (5) the vendor/landlord does not make or give either Pedder or any person in their employment any authority to make or give representation or warranty whatsoever in relation to this property.