



Crystal Palace Road, SE22 | £1,050,000

02087028222

[eastdulwich@pedderproperty.com](mailto:eastdulwich@pedderproperty.com)

**pedder**  
We live local





## In General

- Three double bedrooms
- Desirable, residential road
- Good condition throughout
- Potential to modernise and extend (STPP)
- Cellar/basement
- 34ft low-maintenance garden
- CHAIN FREE

## In Detail

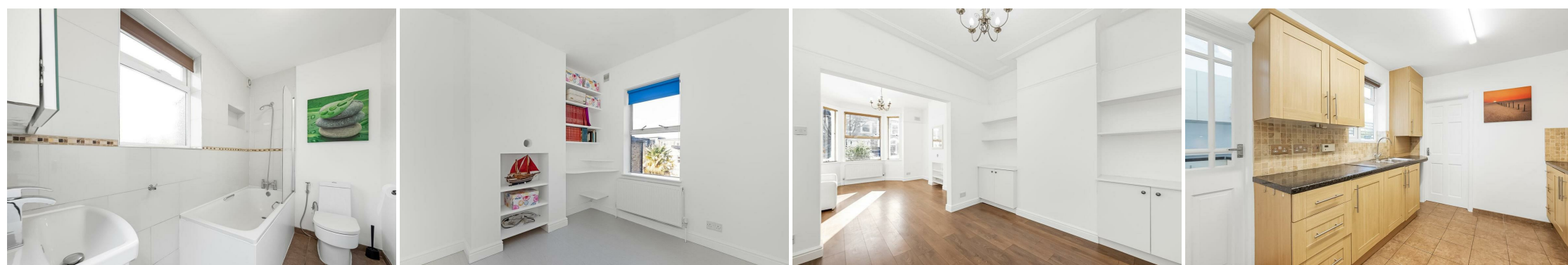
CHAIN FREE - Charming, spacious and beautifully-bright three-bedroom mid-terrace house on this desirable, residential road in the heart of East Dulwich.

Boasting over 1,260 Sq Ft of internal space - including the cellar/basement - this has been a much-loved and well-maintained family home and could benefit from gentle modernisation in places with scope to loft and kitchen extend (subject to planning).

There is a 26-ft bay-fronted double reception which leads through to a utility room and the eat-in kitchen as well as the downstairs bathroom. There is a 34-ft low-maintenance landscaped with mature trees and shrubs - including a gorgeous fruit-producing Olive tree. Upstairs are three comfortable bedrooms - including the 16-ft principal bedroom and access into the loft.

Crystal Palace Road is enviably located for the excellent schools, parks and green spaces as well as the independent shops, coffee shops, bars and restaurants of Lordship Lane and North Cross Road. There are strong transport links into The City and West End from East Dulwich station (0.6 miles) and Peckham Rye station (1.1 miles) as well as bus/cycle routes through the neighbouring Dulwich Village, Herne Hill and Camberwell.

EPC : D | Council Tax : D |

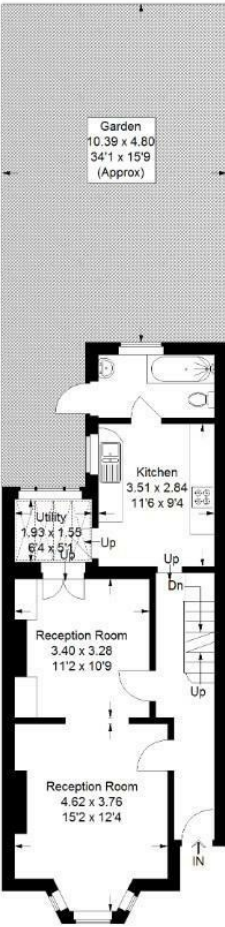




# Floorplan

Crystal Palace Road, SE22

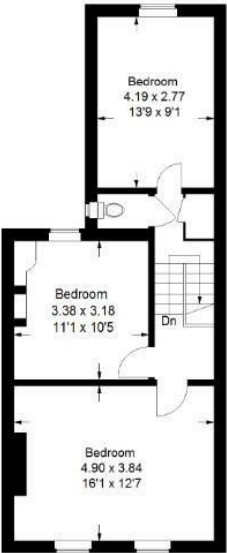
Approximate Gross Internal Area  
117.4 sq m / 1264 sq ft



Ground Floor

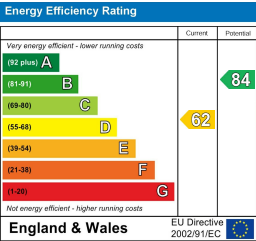


Lower  
Ground Floor



First Floor

Copyright www.pedderproperty.com © 2025  
These plans are for representation purposes only as defined by RICS - Code of Measuring Practice. Not drawn to Scale. Windows and door openings are approximate. Please check all dimensions, shapes and compass bearings before making any decisions reliant upon them.



Pedder Property Ltd trading as Pedder for themselves and for the vendor/landlord of this property whose agents they are, give notice that (1) these particulars do not constitute any part of an offer or contract, (2) all statements contained within these particulars are made without responsibility on the part of Pedder or the vendor/landlord, (3) whilst made in good faith, none of the statements contained within these particulars are to be relied upon as a statement of representation or fact, (4) any intending purchaser/tenant must satisfy him/herself by inspection or otherwise as to the correctness of each of the statements contained within these particulars, (5) the vendor/landlord does not make or give either Pedder or any person in their employment any authority to make or give representation or warranty whatsoever in relation to this property.