



Dog Kennel Hill, SE22 | £500,000

02087028222

eastdulwich@pedderproperty.com

pedder
We live local



In General

- Two double bedrooms
- Two bathrooms
- Private balcony
- Over 775 Sq Ft
- Excellent condition throughout
- Lift access
- Bicycle storage

In Detail

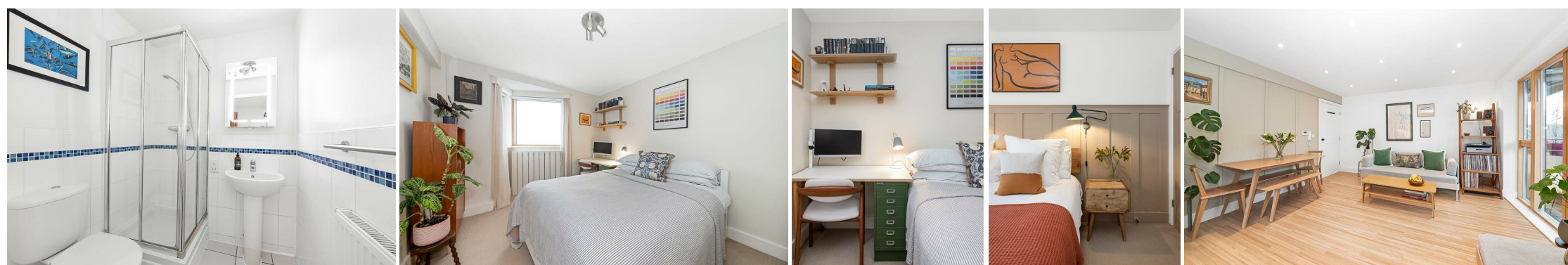
Stunning, spacious and beautifully bright two bedroom, two-bathroom purpose built apartment ideally located between East Dulwich and Camberwell.

Located on the second floor of Mary Seacole Court, the gorgeous modern apartment boasts over 775 sq ft of internal space, which has been lovingly maintained by the current owners, as well as a delightful private balcony overlooking the rear. There is a 19 x 13 ft open-plan kitchen-reception, two comfortable double bedrooms including an en suite to the 17 ft principal bedroom as well as a family bathroom.

Dog Kennel Hill offers easy access into The City and West End from East Dulwich station (0.3 miles) and Denmark Hill station (0.4 miles) as well as strong bus/cycle routes through the neighbouring Peckham Rye, Herne Hill and Dulwich Village. There are a host of independent shops, bars, restaurants and coffee shops on Lordship Lane, North Cross Road and Bellenden Road as well as a choice of parks and green spaces.

Early viewing recommended.

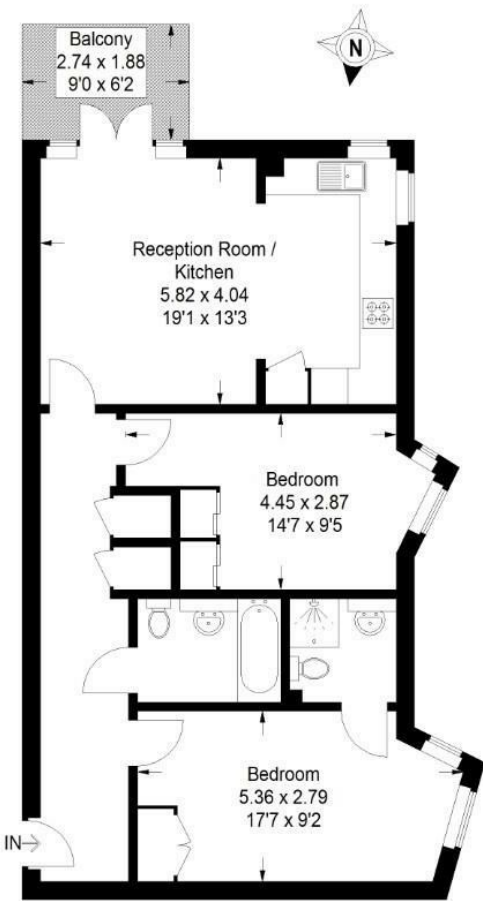
EPC: C | Council Tax Band D | Lease: 108 years remaining | SC: £188.15 | GR: £0 | BI: Incl. in SC



Floorplan

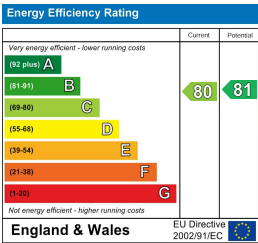
Mary Seacole House, SE22

Approximate Gross Internal Area
72.4 sq m / 779 sq ft



Second Floor

Copyright www.pedderproperty.com © 2024
These plans are for representation purposes only as defined by RICS - Code of Measuring Practice. Not drawn to Scale. Windows and door openings are approximate. Please check all dimensions, shapes and compass bearings before making any decisions reliant upon them.



Pedder Property Ltd trading as Pedder for themselves and for the vendor/landlord of this property whose agents they are, give notice that (1) these particulars do not constitute any part of an offer or contract, (2) all statements contained within these particulars are made without responsibility on the part of Pedder or the vendor/landlord, (3) whilst made in good faith, none of the statements contained within these particulars are to be relied upon as a statement of representation or fact, (4) any intending purchaser/tenant must satisfy him/herself by inspection or otherwise as to the correctness of each of the statements contained within these particulars, (5) the vendor/landlord does not make or give either Pedder or any person in their employment any authority to make or give representation or warranty whatsoever in relation to this property.