



Mercia Court, Highwood Close, SE22
OIEO £500,000

0208 702 8222
pedderproperty.com

pedder



In general

- Two double bedrooms
- Two bathrooms
- Private balcony
- Good condition throughout
- Secure, gated development
- Lift access
- Secure underground allocated parking space

In detail

Stunning, spacious and well-maintained two-bedroom modern apartment with gorgeous leafy views from a private balcony between East Dulwich and Forest Hill.

Mercia Court is enviably located at the rear of Highwood Close with views over the neighbouring allotments and Dulwich & Sydenham Woods. There are strong transport links into The City and West End from Forest Hill station (0.6 miles) and West Dulwich station (1.2 miles) as well as bus/cycle routes through the neighbouring Dulwich Village, Peckham Rye and Denmark Hill.

There are an array of independent shops, bars and restaurants on London Road and Lordship Lane as well as a choice of great parks and green spaces.

Boasting over 825 Sq Ft of internal space on the third floor of this 2006-built block – there are two comfortable double bedrooms with an en-suite to the 15-ft principal bedroom. There is a beautifully bright 19 x 11 ft reception room with an attached kitchen.

Early viewing recommended.

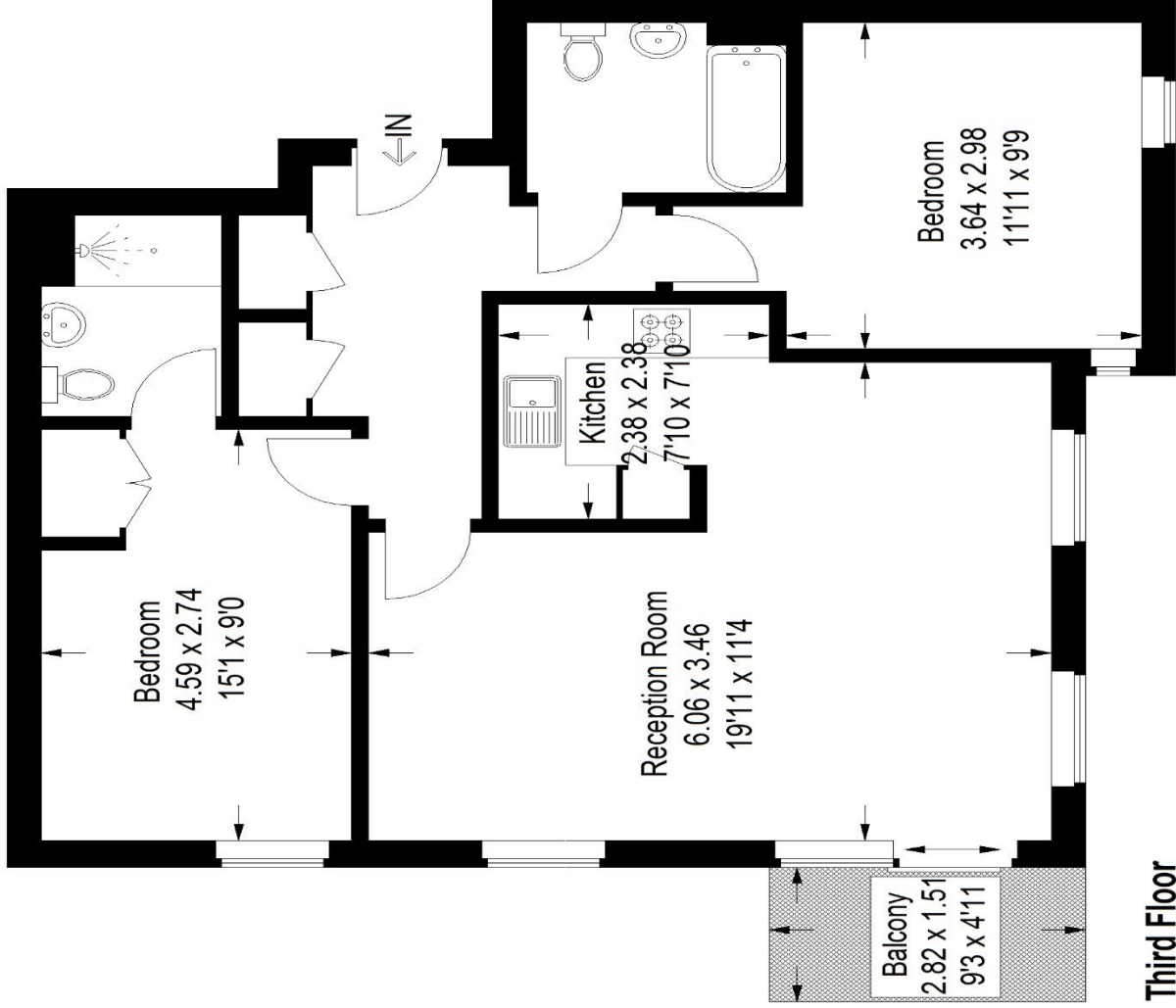
EPC: C | Council Tax Band: D | Lease: 131 years remaining | SC £3,500 pa | GR: £300 pa | Buildings Insurance: Included in SC



Floorplan

Mercia Court, SE22

Approximate Gross Internal Area
77.0 sq m / 829 sq ft



Third Floor



Copyright www.pedderproperty.com © 2024

These plans are for representation purposes only as defined by RICS - Code of Measuring Practice. Not drawn to Scale. Windows and door openings are approximate. Please check all dimensions, shapes and compass bearings before making any decisions reliant upon them.

Pedder Property Ltd trading as Pedder for themselves and for the vendor/landlord of this property whose agents they are, give notice that (1) these particulars do not constitute any part of an offer or contract, (2) all statements contained within these particulars are made without responsibility on the part of Pedder or the vendor/landlord, (3) whilst made in good faith, none of the statements contained within these particulars are to be relied upon as a statement of representation or fact, (4) any intending purchaser/tenant must satisfy him/herself by inspection or otherwise as to the correctness of each of the statements contained within these particulars, (5) the vendor/landlord does not make or give either Pedder or any person in their employment any authority to make or give representation or warranty whatsoever in relation to this property.