



Giles Coppice, SE19 | £650,000

02087028111

[dulwichvillage@pedderproperty.com](mailto:dulwichvillage@pedderproperty.com)

**pedder**  
We live local







# In General

- A modern three storey townhouse
- Upgraded and modernised throughout
- Three bedrooms
- Light and spacious open-plan lounge/dining room
- Modern kitchen, bathroom
- Utility room, large 23' x 9' storage room
- Rear terrace accessed from the lounge
- Very well presented throughout
- Offered with no onward chain

# In Detail

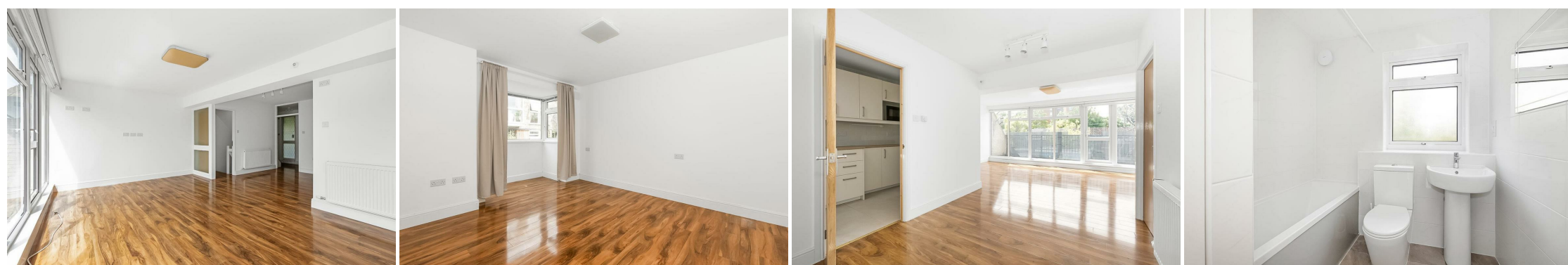
A modern three storey townhouse for sale situated in this very popular residential cul-de-sac on the border of Dulwich and Crystal Palace.

The property offers spacious and flexible accommodation over three floors comprising on the ground floor a spacious open-plan lounge/dining room with a patio door leading out to a lovely rear terrace, a modern fitted kitchen and downstairs WC. On the first floor there are three bedrooms and a modern bathroom. The lower ground floor has a large utility area/storage room measuring 23' x 9' and a further storage room measuring 9' x 6'.

Situated on the border of the popular Dulwich Village and Crystal Palace areas, Giles Coppice offers easy access to shops, cafes, restaurants, sports and leisure facilities, excellent schools and many green spaces including Dulwich Woods, Dulwich Park and Crystal Palace Park. Multiple transport options are available within walking distance, including Sydenham Hill, Crystal Palace and Gipsy Hill stations with fast rail links to Victoria, London Bridge, Blackfriars and London Overground lines with tube connections.

Offered with no onward chain.

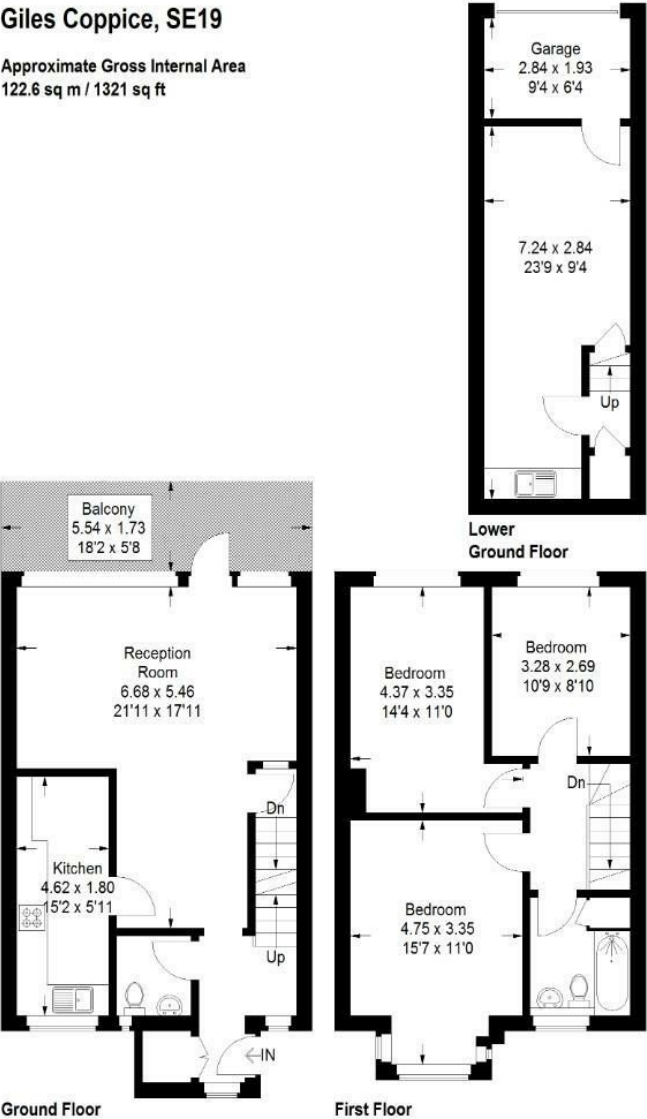
EPC: D | Council Tax Band: E | Lease: 129 years remaining | SC: £430 pa | GR: Nil | BI: TBC



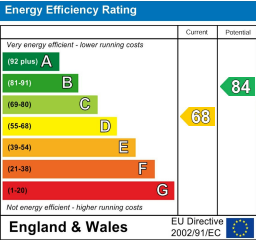
# Floorplan

Giles Coppice, SE19

Approximate Gross Internal Area  
122.6 sq m / 1321 sq ft



Copyright www.pedderproperty.com © 2025  
These plans are for representation purposes only as defined by RICS - Code of Measuring Practice.  
Not drawn to Scale. Windows and door openings are approximate. Please check all dimensions, shapes and compass bearings before making any decisions reliant upon them.



Pedder Property Ltd trading as Pedder for themselves and for the vendor/landlord of this property whose agents they are, give notice that (1) these particulars do not constitute any part of an offer or contract, (2) all statements contained within these particulars are made without responsibility on the part of Pedder or the vendor/landlord, (3) whilst made in good faith, none of the statements contained within these particulars are to be relied upon as a statement of representation or fact, (4) any intending purchaser/tenant must satisfy him/herself by inspection or otherwise as to the correctness of each of the statements contained within these particulars, (5) the vendor/landlord does not make or give either Pedder or any person in their employment any authority to make or give representation or warranty whatsoever in relation to this property.