



Thurlow Park Road, SE21 | £599,950

02087028111

[dulwichvillage@pedderproperty.com](mailto:dulwichvillage@pedderproperty.com)

**pedder**  
We live local





# In General

- An attractive split-level apartment
- Spacious accommodation - 1003 sq ft
- Two double bedrooms
- One reception room with sliding patio doors leading to a south facing balcony
- Spacious 18' x 1' kitchen/breakfast room
- Modern bathroom
- Off street parking
- Very well presented
- Central location close to transport links
- Offered with no onward chain

# In Detail

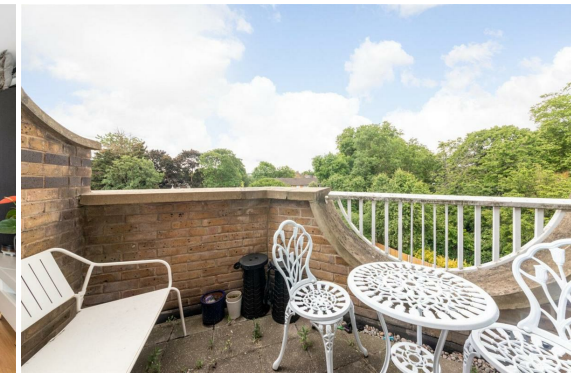
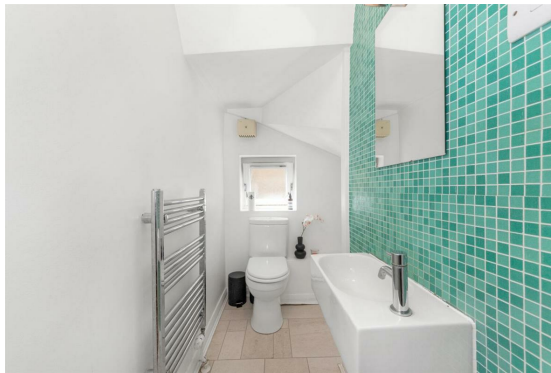
Set over the upper floors of this elegant apartment building is this spacious and very well presented two double bedroom split-level apartment on Thurlow Park Road, SE21, which extends to 1003 sq ft of light and bright accommodation.

The property comprises of two double bedrooms, reception room with sliding patio doors leading out to a south facing balcony, spacious 18' x 13' integrated kitchen/breakfast room and modern bathroom. Externally to the front of the property there is off street parking.

The property is well located within moments of West Dulwich station which provides fast trains to Victoria and Blackfriars. Both West Dulwich and Dulwich Village are close-by with their numerous independent shops, cafes and restaurants. Nearby Dulwich Park, Dulwich and Sydenham Woods, Belair Park and Brockwell Park offer beautiful green spaces.

The property is offered with no onward chain.

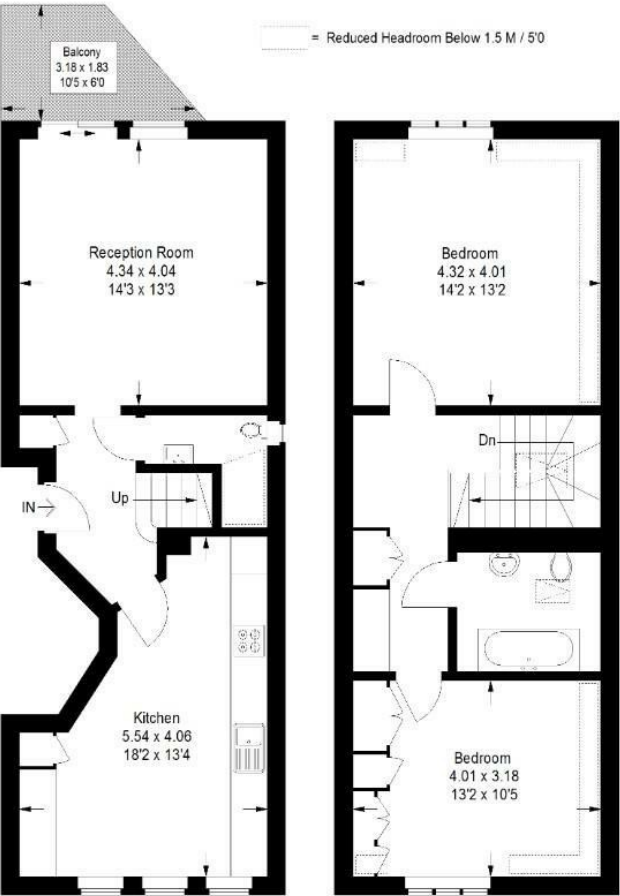
EPC: C | Council Tax Band: C | Lease: 178 years remaining | SC: £5,000 pa | GR: TBC | BI: £TBC



# Floorplan

Thurlow Park Road, SE21

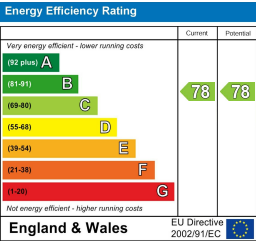
Approximate Gross Internal Area  
93.2 sq m / 1003 sq ft



Second Floor

Third Floor

Copyright www.pedderproperty.com © 2025  
These plans are for representation purposes only as defined by RICS - Code of Measuring Practice. Not drawn to Scale. Windows and door openings are approximate. Please check all dimensions, shapes and compass bearings before making any decisions reliant upon them.



Pedder Property Ltd trading as Pedder for themselves and for the vendor/landlord of this property whose agents they are, give notice that (1) these particulars do not constitute any part of an offer or contract, (2) all statements contained within these particulars are made without responsibility on the part of Pedder or the vendor/landlord, (3) whilst made in good faith, none of the statements contained within these particulars are to be relied upon as a statement of representation or fact, (4) any intending purchaser/tenant must satisfy him/herself by inspection or otherwise as to the correctness of each of the statements contained within these particulars, (5) the vendor/landlord does not make or give either Pedder or any person in their employment any authority to make or give representation or warranty whatsoever in relation to this property.