



Sydenham Hill, SE26 | £400,000

02087028111

[dulwichvillage@pedderproperty.com](mailto:dulwichvillage@pedderproperty.com)

**pedder**  
We live local







# In General

- A lovely second floor purpose built apartment
- Two bedrooms
- Spacious 18' x 12' lounge/dining room
- Fitted kitchen
- Modern bathroom
- Single garage and further off street parking
- Well presented throughout
- Offered with no onward chain

# In Detail

\*\*\*Guide £400,000 - £415,000\*\*\*

A lovely second floor purpose built apartment for sale located on this popular residential development in Tunbridge Court, set back from Sydenham Hill.

The property has accommodation comprising of two bedrooms, large 18' x 12' lounge/dining room, fitted kitchen and modern bathroom. There is also a single garage situated en-bloc and further parking within the development. The property lies just a few minutes walk from London Wildlife Trust's Sydenham Hill Wood and is set within attractive communal gardens.

The property is well located for access to both East Dulwich and Crystal Palace which offer numerous cafes, bars and restaurants. The popular Dulwich Wood House pub is situated close-by. Dulwich Village is also easily accessible with its excellent schools, numerous independent cafes and restaurants, the famous Picture Gallery and Dulwich and Sydenham Hill golf course. The nearest railway station is Sydenham Hill with services into London Victoria and Blackfriars.

The property is offered with no onward chain.

EPC: D | Council Tax Band: C | Lease: 127 Years Remaining | SC:£1,870 PA | GR: NIL | BI: Incl in SC

1

2

3

4

5

6

7

8

9

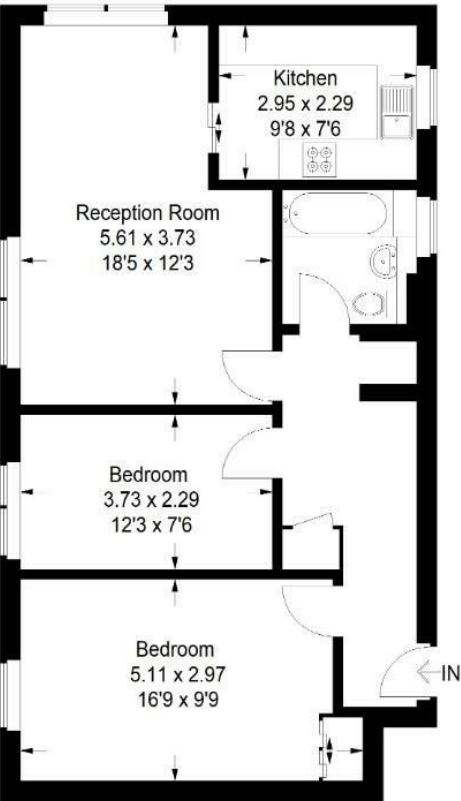
10



# Floorplan

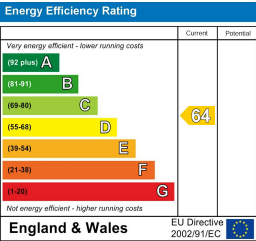
## Tunbridge Court, SE26

Approximate Gross Internal Area  
65.7 sq m / 707 sq ft



### Second Floor

Copyright www.pedderproperty.com © 2025  
These plans are for representation purposes only as defined by RICS - Code of Measuring Practice. Not drawn to Scale. Windows and door openings are approximate. Please check all dimensions, shapes and compass bearings before making any decisions reliant upon them.



Pedder Property Ltd trading as Pedder for themselves and for the vendor/landlord of this property whose agents they are, give notice that (1) these particulars do not constitute any part of an offer or contract, (2) all statements contained within these particulars are made without responsibility on the part of Pedder or the vendor/landlord, (3) whilst made in good faith, none of the statements contained within these particulars are to be relied upon as a statement of representation or fact, (4) any intending purchaser/tenant must satisfy him/herself by inspection or otherwise as to the correctness of each of the statements contained within these particulars, (5) the vendor/landlord does not make or give either Pedder or any person in their employment any authority to make or give representation or warranty whatsoever in relation to this property.