



Glebe Hyrst, SE19  
£1,200,000

0208 702 8111  
[pedderproperty.com](http://pedderproperty.com)

**pedder**



# In general

- A detached family house for sale located on this secluded residential cul-de-sac on the border of Dulwich and Upper Norwood
- Four bedrooms
- Two bathrooms (one en-suite)
- Lounge/dining room, study/office
- Further front reception room
- Kitchen/dining room, utility room
- Lovely mature garden to the rear and side
- Double garage and further off street parking
- Potential to extend (subject to planning consents)
- Offered with no onward chain

# In detail

A detached family house for sale located in this secluded residential cul-de-sac on the border of Dulwich and Upper Norwood.

The property offers spacious accommodation over two floors comprising four bedrooms, two bathrooms (one en-suite), study/office, large lounge/dining room, further front reception room, kitchen/dining room and utility room. Externally to the rear and side there is a lovely, mature garden. There is also a double garage and further off-street parking. The property offers potential for further extension subject to planning consents.

Glebe Hyrst is well located for access to Dulwich Village with its outstanding schools, Picture Gallery, golf course, boutiques and restaurants. Crystal Palace centre is close by with numerous cafes, shops, restaurants and leisure facilities. Rail links to central London are from nearby Sydenham Hill (London Victoria and London Blackfriars) and Gipsy Hill (London Bridge and London Victoria). The property would benefit from some modernisation but offers an incoming buyer the opportunity to create their ideal family home.

Offered with no onward chain.

EPC: D | Council Tax Band: G

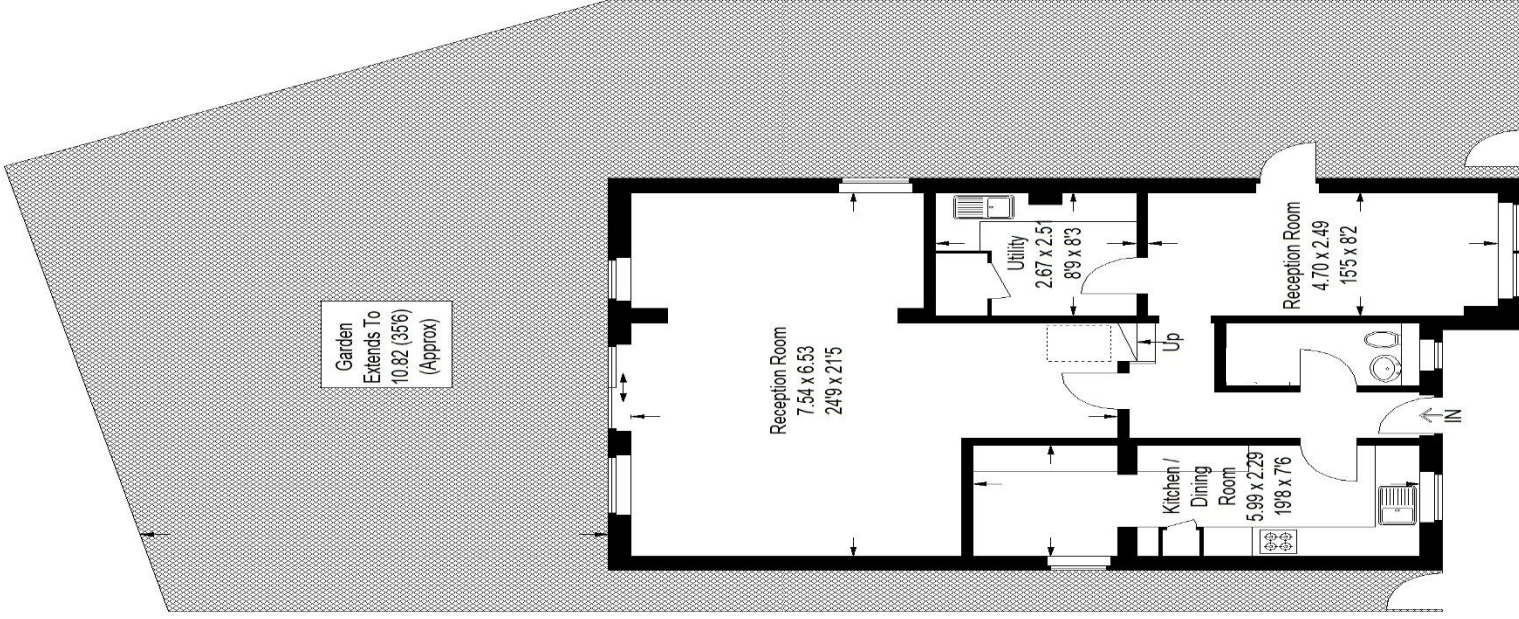
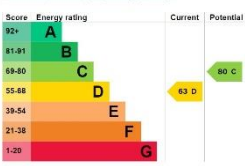


# Floorplan

## Giles Coppice, SE19

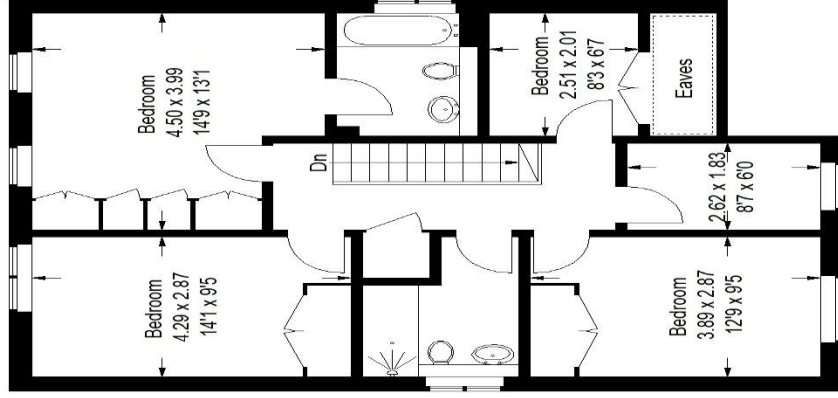
Approximate Gross Internal Area  
(Excluding Eaves)

166.8 sq m / 1688 sq ft



Ground Floor

= Reduced headroom below 1.5m / 5'0"



First Floor

Pedder Property Ltd trading as Pedder for themselves and for the vendor/landlord of this property whose agents they are, give notice that (1) these particulars do not constitute any part of an offer or contract, (2) all statements contained within these particulars are made without responsibility on the part of Pedder or the vendor/landlord, (3) whilst made in good faith, none of the statements contained within these particulars are to be relied upon as a statement of representation or fact, (4) any intending purchaser/tenant must satisfy him/herself by inspection or otherwise as to the correctness of each of the statements contained within these particulars, (5) the vendor/landlord does not make or give either Pedder or any person in their employment any authority to make or give representation or warranty whatsoever in relation to this property.

Copyright www.pedderproperty.com © 2024  
 These plans are for representation purposes only as defined by RICS - Code of Measuring Practice.  
 Not drawn to Scale. Windows and door openings are approximate. Please check all dimensions, shapes and compass bearings before making any decisions reliant upon them.