



Pymers Mead, SE21
Guide Price £900,000

020 8702 8111
pedderproperty.com

pedder



In general

- A stunning modern townhouse for sale
- Upgraded and modernised to an extremely high standard
- Three bedrooms, two bathrooms
- Large ground floor reception room, further study/office
- Spacious L-shaped double reception room to the first floor
- Modern integrated kitchen
- Lovely south facing landscaped patio garden, access to well maintained communal gardens
- Off street parking
- Beautifully presented throughout
- Highly sought after location close to transport links and schools

In detail

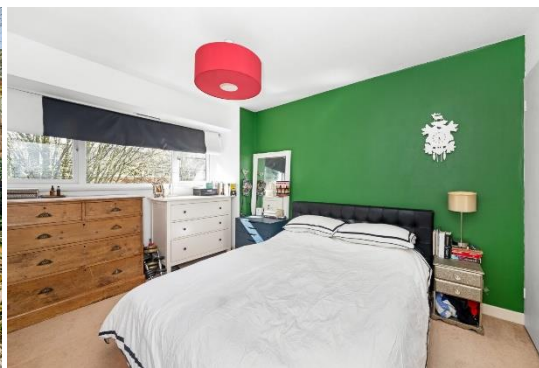
A stunning modern townhouse for sale located on this much sought after development set back from Croxted Road in Dulwich.

The property has been upgraded and modernised to a high standard creating a beautifully presented family home. The ground floor has been remodelled and comprises a reception room with large floor to ceiling glazed doors leading out to the garden. There is also a study/office, downstairs shower room and a garage which is suitable for storage. The first floor has a large light and bright L-shaped double reception room open-plan to a modern integrated kitchen. The second floor has three double bedrooms and a family bathroom. To the rear of the property there is an attractive, south facing landscaped patio garden which in turn gives access to well maintained communal gardens. To the front there is a drive providing off street parking.

Both Dulwich Village and Herne Hill are close by with their outstanding schools, popular parks, numerous cafes, bars and restaurants. Excellent rail links to central London are from nearby West Dulwich (Victoria/Blackfriars) and Herne Hill (Victoria/St Pancras via Thameslink).

An internal viewing of this lovely property is advised.

EPC: D | Council Tax Band: E

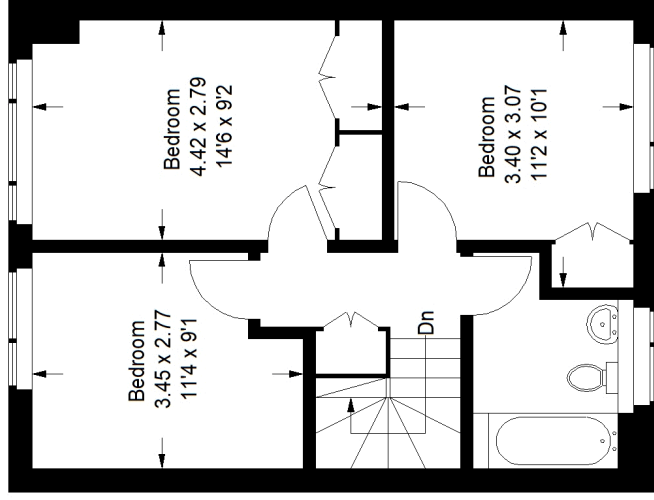


Floorplan

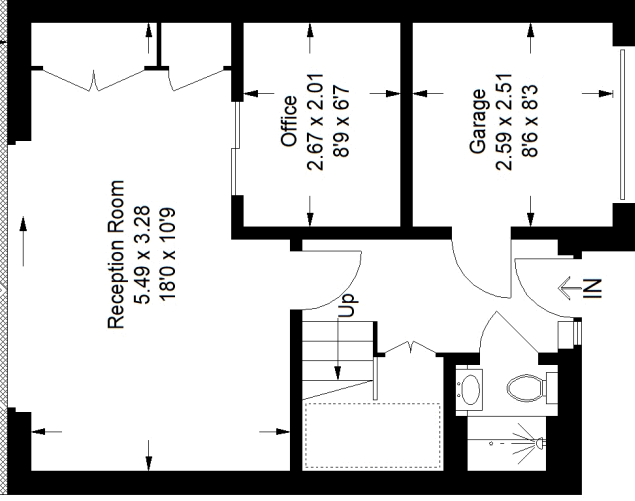
Pymers Mead, SE21
 Approximate Gross Internal Area
 (Including Garage)
 131.0 sq m / 1410 sq ft



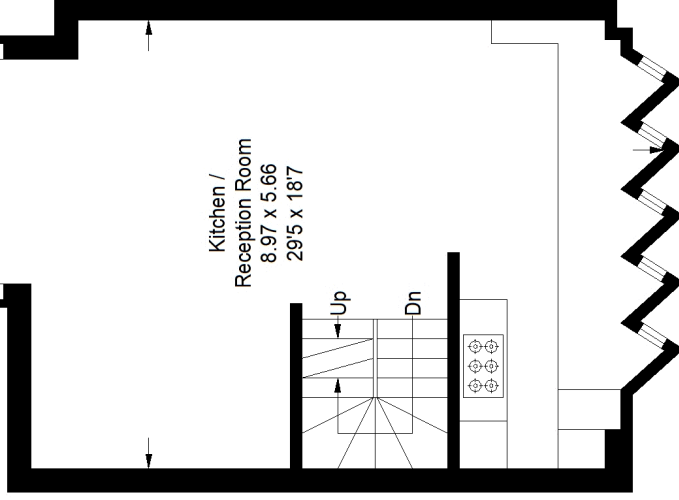
⊞ = Reduced Headroom Below 1.5 M / 50



Second Floor



Ground Floor



First Floor

Score	Energy rating	Current	Potential
92+	A		
81-91	B		
69-80	C		
55-68	D	64 D	
39-54	E		
21-38	F		
1-20	G		

Pedder Property Ltd trading as Pedder for themselves and for the vendor/landlord of this property whose agents they are, give notice that (1) these particulars do not constitute any part of an offer or contract, (2) all statements contained within these particulars are made without responsibility on the part of Pedder or the vendor/landlord, (3) whilst made in good faith, none of the statements contained within these particulars are to be relied upon as a statement of representation or fact, (4) any intending purchaser/tenant must satisfy him/herself by inspection or otherwise as to the correctness of each of the statements contained within these particulars, (5) the vendor/landlord does not make or give either Pedder or any person in their employment any authority to make or give representation or warranty whatsoever in relation to this property.

Copyright www.pedderproperty.com © 2024

These plans are for representation purposes only as defined by RICS - Code of Measuring Practice. Not drawn to Scale. Windows and door openings are approximate. Please check all dimensions, shapes and compass bearings before making any decisions reliant upon them.