



Thorpewood Avenue, SE26 | £1,100,000

02087029444

foresthill@pedderproperty.com

pedder
We live local



In General

- Chain free
- Five bedrooms
- Two reception rooms
- Separate dining room
- Large private rear garden
- Bathroom suite & en-suite
- 0.4 miles to Forest Hill station
- Utility room
- Close to local amenities
- Original features

In Detail

An incredible semi-detached five-bedroom family home for sale on the highly sought-after Thorpewood Avenue, offered chain-free.

Spanning over 2,100 sq ft, not including the substantial loft space, the property features two spacious reception rooms (one with direct access to the rear garden), five double bedrooms, a modern family bathroom, an en-suite bathroom, a spacious dining room, and a separate fitted kitchen at the rear. Additional benefits include abundant natural light, an entrance porch, a rear utility room, a downstairs WC, an original fireplace, and period features. The property also offers potential for extension, subject to planning permission.

Located just 0.4 miles from Forest Hill Station, the property provides excellent transport links to London Bridge, Victoria, Canada Water, Shoreditch, Whitechapel, Highbury & Islington, and beyond. It is also conveniently situated near a range of local amenities, including restaurants, pubs, coffee shops, cafes, the Forest Hill Pools, and the beautiful Horniman Park and Museum. The highly regarded Eliot Bank Primary School is just moments away.

Viewings are highly recommended. Contact the Pedder Forest Hill Sales team to arrange a viewing.

EPC: D | Council Tax Band: F

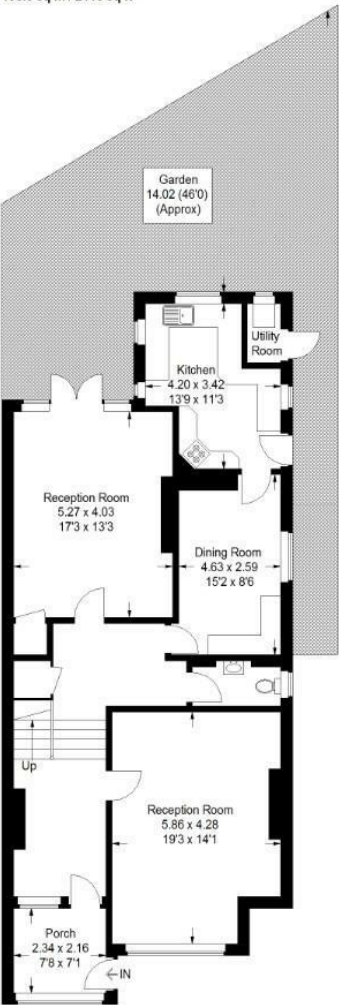


Floorplan

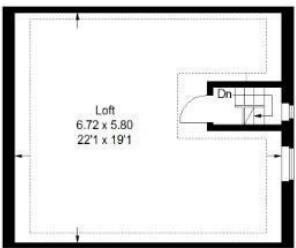
Thorpewood Avenue, SE26

Approximate Gross Internal Area
(Excluding Loft)
196.6 sq m / 2116 sq ft

□ = Reduced headroom below 1.5 m / 5'0"



Ground Floor

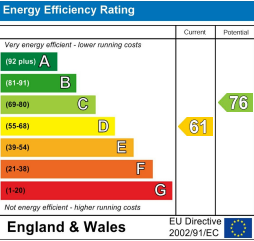


Loft



First Floor

Copyright www.pedderproperty.com © 2025
These plans are for representation purposes only as defined by RICS - Code of Measuring Practice.
Not drawn to Scale. Windows and door openings are approximate. Please check all dimensions, shapes and compass bearings before making any decisions reliant upon them.



Pedder Property Ltd trading as Pedder for themselves and for the vendor/landlord of this property whose agents they are, give notice that (1) these particulars do not constitute any part of an offer or contract, (2) all statements contained within these particulars are made without responsibility on the part of Pedder or the vendor/landlord, (3) whilst made in good faith, none of the statements contained within these particulars are to be relied upon as a statement of representation or fact, (4) any intending purchaser/tenant must satisfy him/herself by inspection or otherwise as to the correctness of each of the statements contained within these particulars, (5) the vendor/landlord does not make or give either Pedder or any person in their employment any authority to make or give representation or warranty whatsoever in relation to this property.