



London Road, SE23 | £535,000

02087029444

foresthill@pedderproperty.com

pedder
We live local



In General

- Set over 1,100 Sq Ft
- New kitchen/diner
- New bathroom suite
- Large private rear garden
- Off-street parking
- Great location
- Period features
- Spacious reception room
- Ground floor entrance hallway
- Moments from the Horniman Museum & Gardens

In Detail

A beautifully presented two-double-bedroom period conversion for sale with a large private rear garden in the heart of Forest Hill.

Set over 1,100 sq ft within a stunning double-fronted detached building, this charming property comprises a spacious reception room with bay window and feature fireplace, a fully refurbished kitchen/diner, a brand-new bathroom suite, and two large double bedrooms. Further benefits include ample storage, off-street parking, sash windows, high ceilings, various period features, and much more.

The property is situated just 0.3 miles from Forest Hill station, offering excellent transport links to London Bridge, Victoria, Canada Water, Canary Wharf, Shoreditch, Whitechapel, Highbury & Islington, and many other destinations across London. It is also conveniently located for a wide range of local amenities, including parks, restaurants, supermarkets, Forest Hill Pools & Leisure Centre, independent coffee shops and cafés, gastropubs, and the ever-popular Horniman Museum & Gardens.

Viewings are highly recommended. Contact the Pedder Forest Hill sales team today to arrange a viewing.

EPC: D | Council Tax Band: C | Leasehold 93 years remaining | SC: £169.88 pm | GR: £0 | BI: incl. in SC

1

2

3

4

5

6

7

8

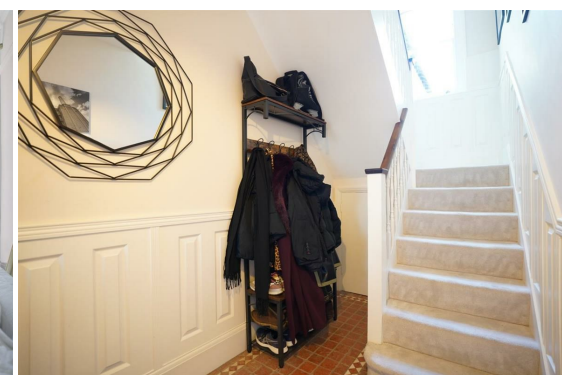
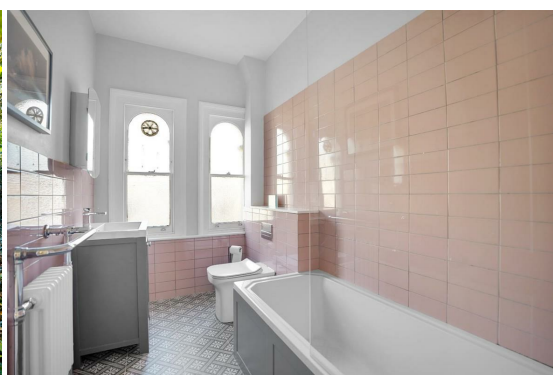
9

10

11

12

13

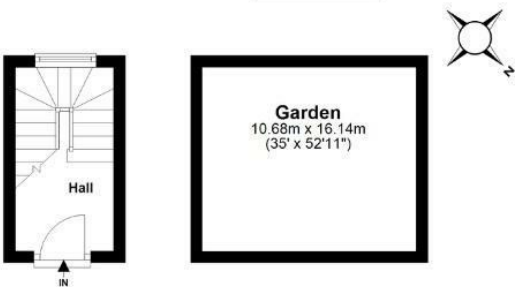


Floorplan

Ground Floor

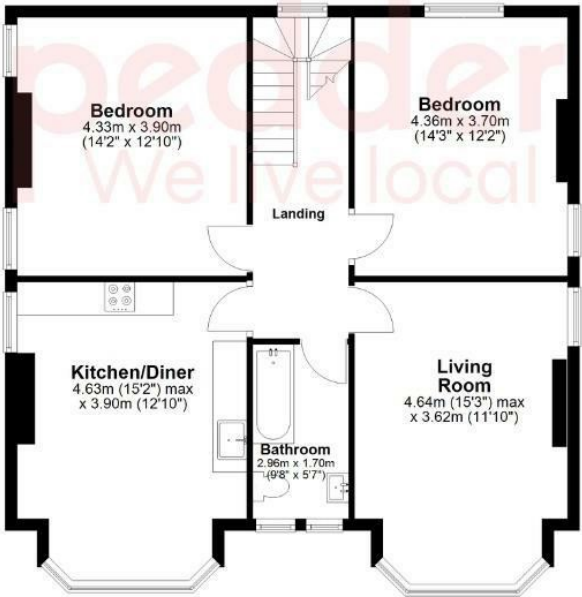
Approx. 20.1 sq. metres (216.0 sq. feet)

(Not Shown in Actual
Location / Orientation)



First Floor

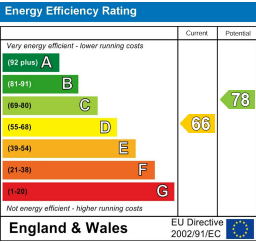
Approx. 84.2 sq. metres (906.5 sq. feet)



Total area: approx. 104.3 sq. metres (1122.5 sq. feet)

Copyright www.pedderproperty.com 2024. These plans are for representation purposes only as Defined by RICS - Code of Measuring Practice. Not drawn to scale. windows and door measurements are approximate, please check dimensions, shapes and compass bearings before making any decisions reliant upon them.

Plan produced using PlanUp.



Pedder Property Ltd trading as Pedder for themselves and for the vendor/landlord of this property whose agents they are, give notice that (1) these particulars do not constitute any part of an offer or contract, (2) all statements contained within these particulars are made without responsibility on the part of Pedder or the vendor/landlord, (3) whilst made in good faith, none of the statements contained within these particulars are to be relied upon as a statement of representation or fact, (4) any intending purchaser/tenant must satisfy him/herself by inspection or otherwise as to the correctness of each of the statements contained within these particulars, (5) the vendor/landlord does not make or give either Pedder or any person in their employment any authority to make or give representation or warranty whatsoever in relation to this property.