



Grizedale Terrace, SE23 | £780,000

02087029444

foresthill@pedderproperty.com

pedder
We live local



In General

- Chain free
- Five bedrooms
- 32ft open plan kitchen/reception room
- Just 0.5 miles to Forest Hill Station
- Off street parking/driveway
- Two modern bathroom suites
- Diamond-polished concrete flooring
- Private garden
- Popular location
- High spec finish throughout

In Detail

A beautifully presented five-bedroom, house for sale on Grizedale Terrace, Forest Hill. Offered chain-free.

This lovely home has been fully refurbished to a very high specification and comprises a spacious 32ft open-plan kitchen/reception room, five bedrooms, two modern bathrooms, and a private rear garden. Additional benefits include off-street parking, diamond-polished concrete flooring, central water softener, cavity wall insulation, eco-fireplace, underfloor heating with heating zones, double glazing, abundant natural light, ample storage, and much more.

The property is situated just 0.5 miles from Forest Hill station, offering excellent transport links to London Bridge, Victoria, Canary Wharf, Shoreditch, the City, and beyond. It is also ideally located for access to local green spaces, including Horniman Gardens, Dulwich and Sydenham Woods, One Tree Hill, Dulwich Park, and Peckham Rye Park. The vibrant heart of Forest Hill is just a short walk away, with a wide range of restaurants, supermarkets, independent cafés, boutique shops, and gastropubs.

Viewings are highly recommended. Contact the Pedder Forest Hill sales team to arrange a viewing.

EPC: C | Council Tax Band: D

1

2

3

4

5

6

7

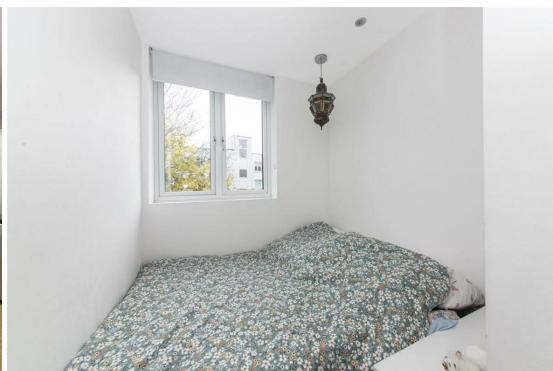
8

9

10

11

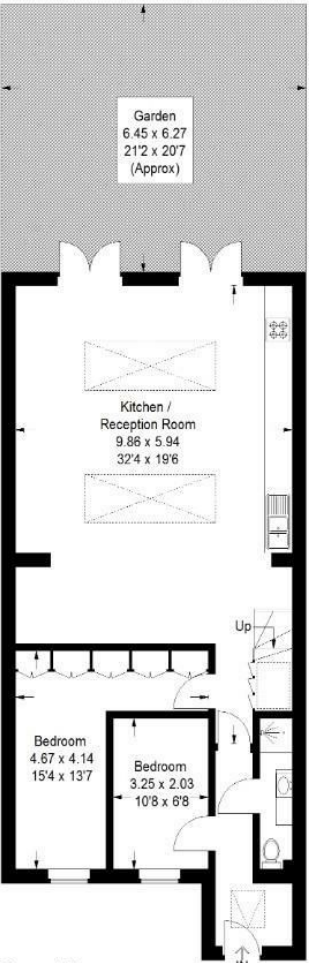
12



Floorplan

Grizedale Terrace, SE23

Approximate Gross Internal Area
116.8 sq m / 1257 sq ft



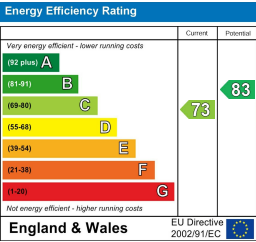
Ground Floor



First Floor

□ = Reduced headroom below 1.5 m / 5'0

Copyright www.pedderproperty.com © 2025
These plans are for representation purposes only as defined by RICS - Code of Measuring Practice. Not drawn to Scale. Windows and door openings are approximate. Please check all dimensions, shapes and compass bearings before making any decisions reliant upon them.



Pedder Property Ltd trading as Pedder for themselves and for the vendor/landlord of this property whose agents they are, give notice that (1) these particulars do not constitute any part of an offer or contract, (2) all statements contained within these particulars are made without responsibility on the part of Pedder or the vendor/landlord, (3) whilst made in good faith, none of the statements contained within these particulars are to be relied upon as a statement of representation or fact, (4) any intending purchaser/tenant must satisfy him/herself by inspection or otherwise as to the correctness of each of the statements contained within these particulars, (5) the vendor/landlord does not make or give either Pedder or any person in their employment any authority to make or give representation or warranty whatsoever in relation to this property.