



Mount Gardens, SE26 | Offers In Excess Of £1,750,000

02087029444

[foresthill@pedderproperty.com](mailto:foresthill@pedderproperty.com)

**pedder**  
We live local







# In General

- Four double bedrooms
- Two bathrooms
- Large grounds and gardens
- Front driveway
- Detached home
- Built circa 1815
- Double carport to rear
- Side and rear access
- Conservation area
- Popular location

# In Detail

A truly remarkable, detached Georgian home, built circa 1815, with enormous charm and character, for sale on the borders of Upper Sydenham, Forest Hill, and Dulwich.

This exceptional property is set in a peaceful location off of Mount Gardens. Upon arrival, you are greeted by a landscaped front garden featuring a driveway, large studio, garden room, and an outdoor seating area.

The ground floor comprises a bright and spacious 28ft reception room that leads to a 28ft dining room, a utility room, a separate WC, and a large vaulted kitchen with direct access to the rear gardens. The first floor offers four double bedrooms and two bathrooms, one of which is en-suite to the main bedroom.

Further benefits include a large carport to the rear, side garden with a side entrance, period fireplaces, plantation shutters, double-glazed sash windows, wooden flooring, and so much more.

The property is approximately 0.7 miles from Sydenham and Forest Hill stations, with excellent transport links to London Bridge, Victoria, Canada Water, Canary Wharf, Shoreditch, Whitechapel, Highbury & Islington, and many other locations across London. It is also close to local amenities, including outstanding schools, parks, restaurants, supermarkets, coffee shops, and gastropubs.

Viewings are strongly recommended; contact the Pedder Forest Hill sales team to arrange a viewing.

EPC: C | Council Tax Band: G

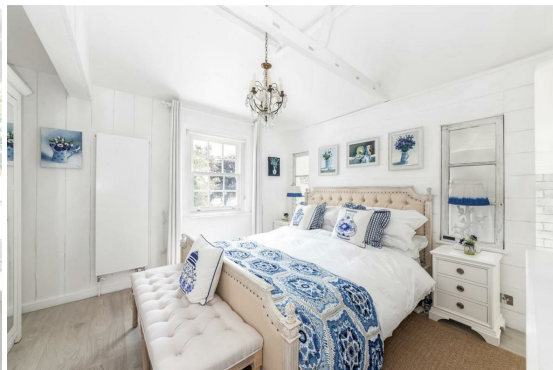
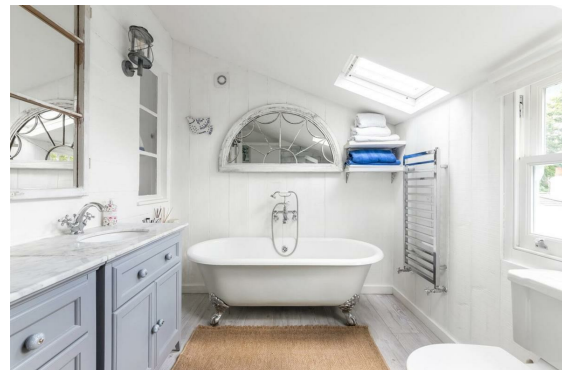
1

2

3

4

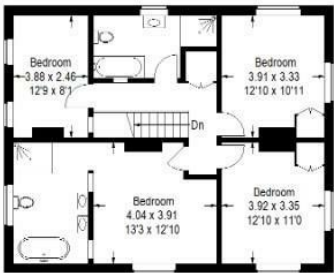
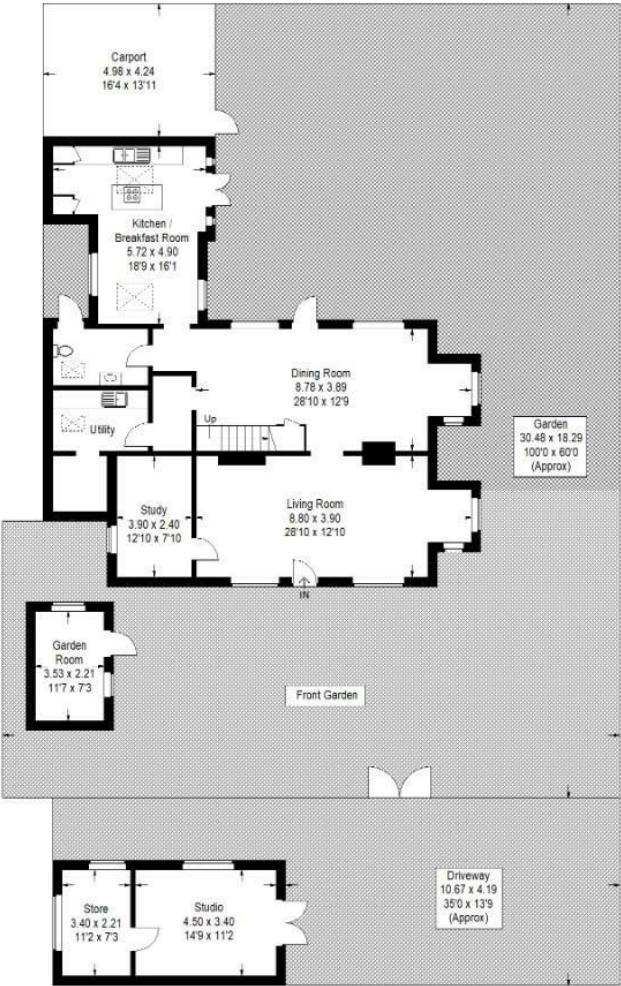
5



# Floorplan

## Mount Gardens SE26

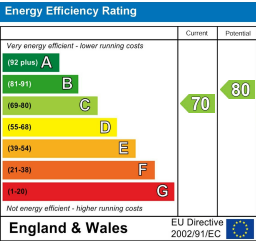
Approximate Gross Internal Area  
197.8 sq m / 2129 sq ft  
Outbuildings = 31.1 sq m / 335 sq ft  
Total = 228.9 sq m / 2464 sq ft



First Floor

## Ground Floor

Copyright www.pedderproperty.com © 2025  
These plans are for representation purposes only as defined by RICS - Code of Measuring Practice. Not drawn to Scale. Windows and door openings are approximate. Please check all dimensions, shapes and compass bearings before making any decisions reliant upon them.



Pedder Property Ltd trading as Pedder for themselves and for the vendor/landlord of this property whose agents they are, give notice that (1) these particulars do not constitute any part of an offer or contract, (2) all statements contained within these particulars are made without responsibility on the part of Pedder or the vendor/landlord, (3) whilst made in good faith, none of the statements contained within these particulars are to be relied upon as a statement of representation or fact, (4) any intending purchaser/tenant must satisfy him/herself by inspection or otherwise as to the correctness of each of the statements contained within these particulars, (5) the vendor/landlord does not make or give either Pedder or any person in their employment any authority to make or give representation or warranty whatsoever in relation to this property.