



Mount Ash Road, SE26 | £800,000

02087029444

[foresthill@pedderproperty.com](mailto:foresthill@pedderproperty.com)

**pedder**  
We live local





## In General

- Built circa 1860
- Very popular street
- Spacious kitchen/reception room
- Modern bathroom suite
- Flexible living arrangement
- Wonderful views
- Beautiful rear garden
- Close to great transport links
- Various period features
- Brick built shed

## In Detail

Guide Price £800,000-£850,000. A beautifully presented mid-terraced house for sale on the highly sought-after Mount Ash Road.

This delightful property, dating back to circa 1860, offers versatile living space, with the option of three double bedrooms or two, complemented by a spacious 23ft open-plan kitchen/reception room. The property also boasts a spacious bathroom suite with a separate walk-in shower and a charming private rear garden. Additional features include sash windows, stripped wooden flooring, wonderful views, an abundance of natural light, ample storage, and much more. There is also a brick built shed with power and lighting at the rear of the garden which could be transformed in to home office/gym.

Forest Hill and Sydenham stations are equidistant, providing excellent transport links to London Bridge, Victoria, Canada Water, Whitechapel, Highbury & Islington, and numerous other destinations. Local amenities are just a short stroll away, with a wide range of restaurants, coffee shops, gastropubs, cafes, parks, and highly regarded schools nearby.

Viewings are strongly recommended – call the Pedder Forest Hill sales team to arrange your appointment today.

EPC: D | Council Tax Band: D

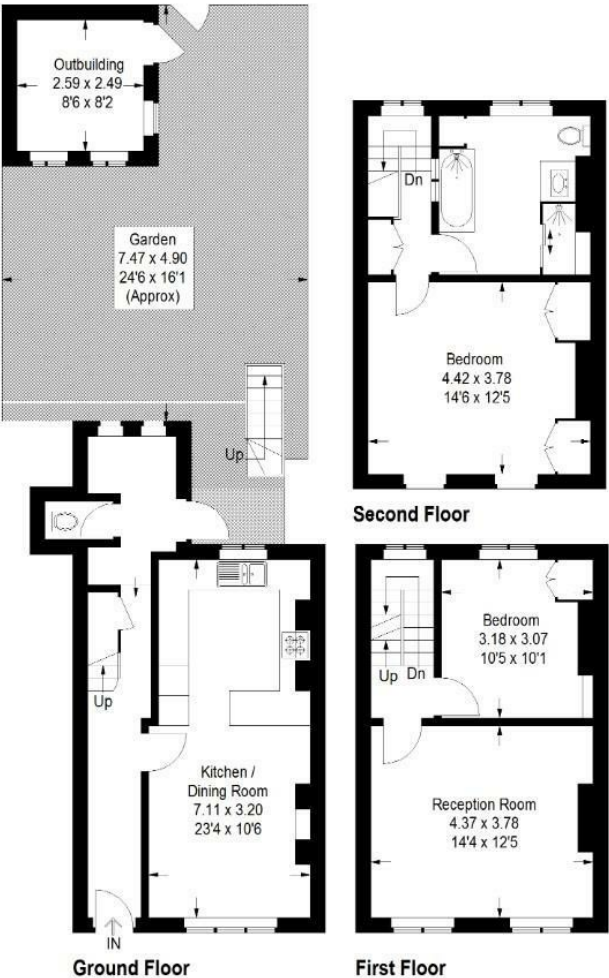




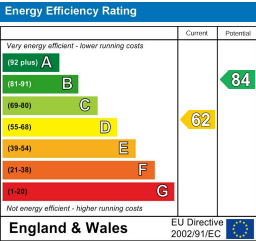
# Floorplan

## Mount Ash Road, SE26

Approximate Gross Internal Area  
(Excluding Outbuilding)  
99.0 sq m / 1066 sq ft



Copyright www.pedderproperty.com © 2025  
These plans are for representation purposes only as defined by RICS - Code of Measuring Practice. Not drawn to Scale. Windows and door openings are approximate. Please check all dimensions, shapes and compass bearings before making any decisions reliant upon them.



Pedder Property Ltd trading as Pedder for themselves and for the vendor/landlord of this property whose agents they are, give notice that (1) these particulars do not constitute any part of an offer or contract, (2) all statements contained within these particulars are made without responsibility on the part of Pedder or the vendor/landlord, (3) whilst made in good faith, none of the statements contained within these particulars are to be relied upon as a statement of representation or fact, (4) any intending purchaser/tenant must satisfy him/herself by inspection or otherwise as to the correctness of each of the statements contained within these particulars, (5) the vendor/landlord does not make or give either Pedder or any person in their employment any authority to make or give representation or warranty whatsoever in relation to this property.