



Clowers Road, SE6 | £1,325,000

02087029444

[foresthill@pedderproperty.com](mailto:foresthill@pedderproperty.com)

**pedder**  
We live local



# In General

- Offered chain free
- Five double bedroom
- 30ft open plan kitchen/reception room with skylights
- Three bathroom suites
- Remarkable 43ft landscaped private rear garden
- Front garden with driveway
- Master bedroom with en-suite bathroom and steam room
- Garage
- Set over 2,704 Sq Ft

# In Detail

Welcome to a sanctuary in the city, meticulously crafted over seven years into a haven of peace and sensory delight. Nestled just a minutes walk from Pool River Park, this five-bedroom semi-detached home is a hidden gem, offering the perfect blend of serene living and urban convenience. Conceived and executed by the creative mind behind Soul. Rooted. Lnd design studio—a designer/ therapist who values inner and outer harmony—along with her builder partner, every detail has been thoughtfully designed to elevate both body and mind.

## A Transformation Like No Other

Stripped back to its very bones and completely refurbished, this home now boasts an expansive loft extension and a full-width rear addition, significantly enhancing the living space on each floor.

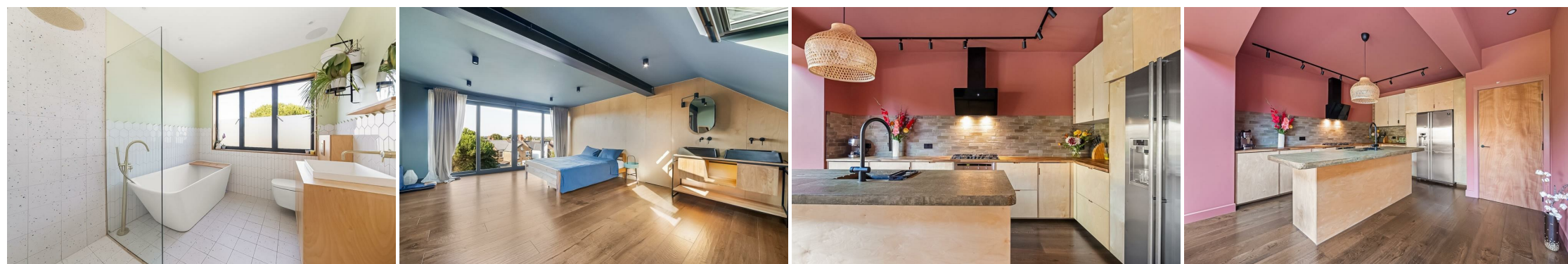
The ground floor showcases modern living at its finest, with wide engineered wooden floors and water underfloor heating throughout. The expansive 70-square-meter area encompasses the kitchen, dining, and living spaces, featuring a built-in library and window seating that make it ideal for both relaxation and entertaining.

The middle floor boasts four generously sized double bedrooms. The standout is the main kids room, a conceptual forest that encourages physical and emotional development. It features treehouse bunk beds, a climbing area, and built-in wardrobes, all complemented by electric underfloor heating.

The loft features a hotel-style bedroom with floor-to-ceiling sliding glass doors, offering stunning views of both London and Kent. The wooden floors and moody decor convey silent luxury. Hidden behind a sleek wooden wall, you'll find a discreet toilet, a walk-in wardrobe, and a cosy steam room.

## Harmonious Design and Modern Comfort

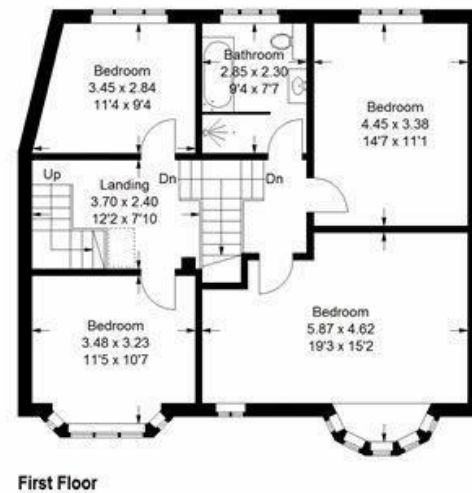
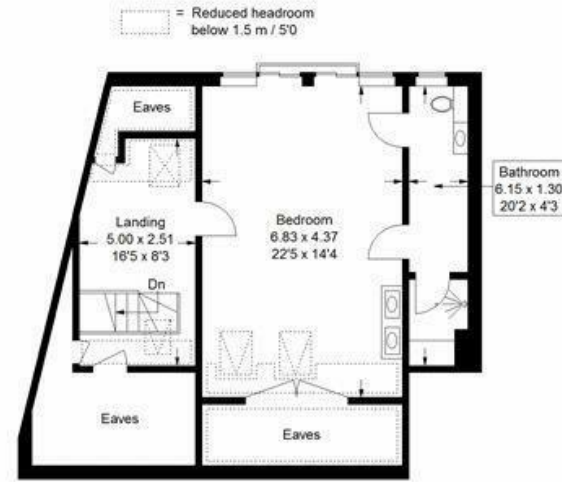
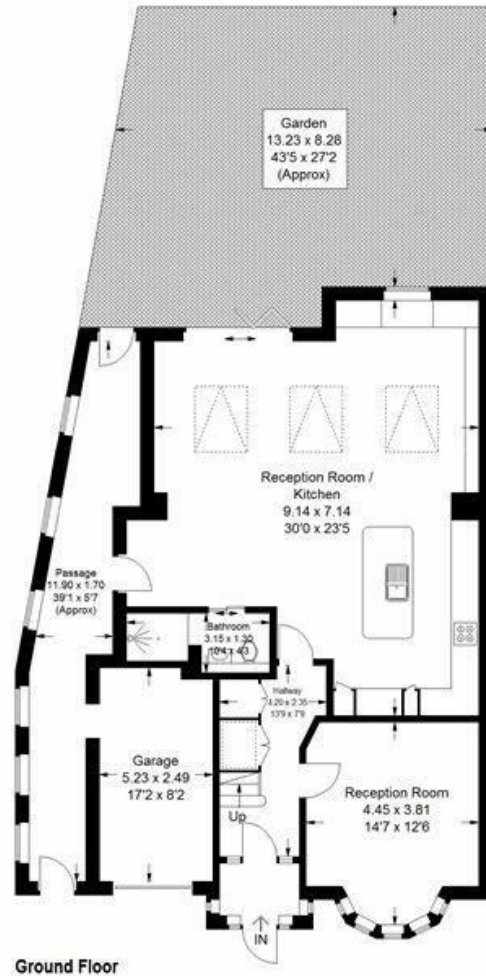
Every material used in this home has been carefully selected to ensure harmony with nature while providing the highest standards of modern living. Plywood accents are a common feature throughout, enhancing the natural aesthetic. The heating system is state-of-the-art, with smart TRV



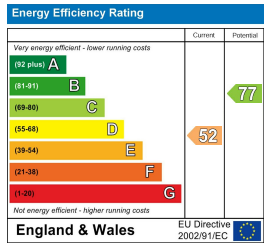
# Floorplan

## Clowders Road, SE6

Approximate Gross Internal Area (Excluding Eaves)  
 239.4 sq m / 2577 sq ft  
 Garage = 11.8 sq m / 127 sq ft  
 Total = 251.2 sq m / 2704 sq ft



Copyright www.pedderproperty.com © 2024  
 These plans are for representation purposes only as defined by RICS - Code of Measuring Practice. Not drawn to Scale. Windows and door openings are approximate. Please check all dimensions, shapes and compass bearings before making any decisions reliant upon them.



Pedder Property Ltd trading as Pedder for themselves and for the vendor/landlord of this property whose agents they are, give notice that (1) these particulars do not constitute any part of an offer or contract, (2) all statements contained within these particulars are made without responsibility on the part of Pedder or the vendor/landlord, (3) whilst made in good faith, none of the statements contained within these particulars are to be relied upon as a statement of representation or fact, (4) any intending purchaser/tenant must satisfy him/herself by inspection or otherwise as to the correctness of each of the statements contained within these particulars, (5) the vendor/landlord does not make or give either Pedder or any person in their employment any authority to make or give representation or warranty whatsoever in relation to this property.